



App Operating Instructions Manual

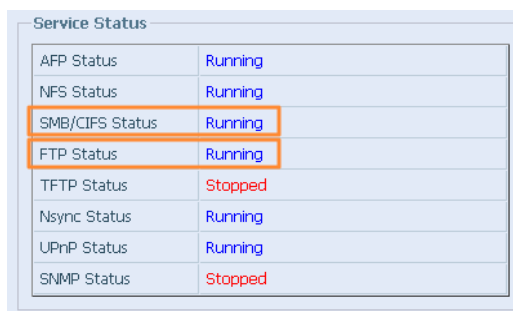
ES File Explorer

❖ ES File Explorer (for Android only)

In addition to managing local / shared / FTP / and Bluetooth file folders, you can also directly manage a variety of cloud storage service folders such as Dropbox, Amazon, Google Drive and others. There is also support for a variety of file formats that can be directly opened with the browser such as ZIP, PDF, Image and multimedia files among others.

Advance notice about using the ES File Explorer:

- To use a LAN connection, turn on the mobile device's Wi-Fi connection and confirm that your Thecus NAS storage device is in the same network domain. If you use a 3G wireless connection, there will be some functions that are not available such as search or connection of a domain shared device.
- To use a Samba or FTP connection, make sure your Thecus NAS has the Samba and FTP services running



AFP Status	Running
NFS Status	Running
SMB/CIFS Status	Running
FTP Status	Running
TFTP Status	Stopped
Nsync Status	Running
UPnP Status	Running
SNMP Status	Stopped

In this paper, the ES File Explorer App instructions have the following topics:

- **Downloading and installing the ES File Explorer App**
- **Connecting to a Thecus NAS via FTP**
- **ES Explorer file uploading and downloading instructions**
- **Uploading a file to a cloud service (ex. Dropbox / Google Drive)**
- **File sharing to social networking sites (ex. Facebook / Google+)**
- **Multimedia broadcasting**

❖ How to download / install the ES File Explorer App



Scan the QR code below

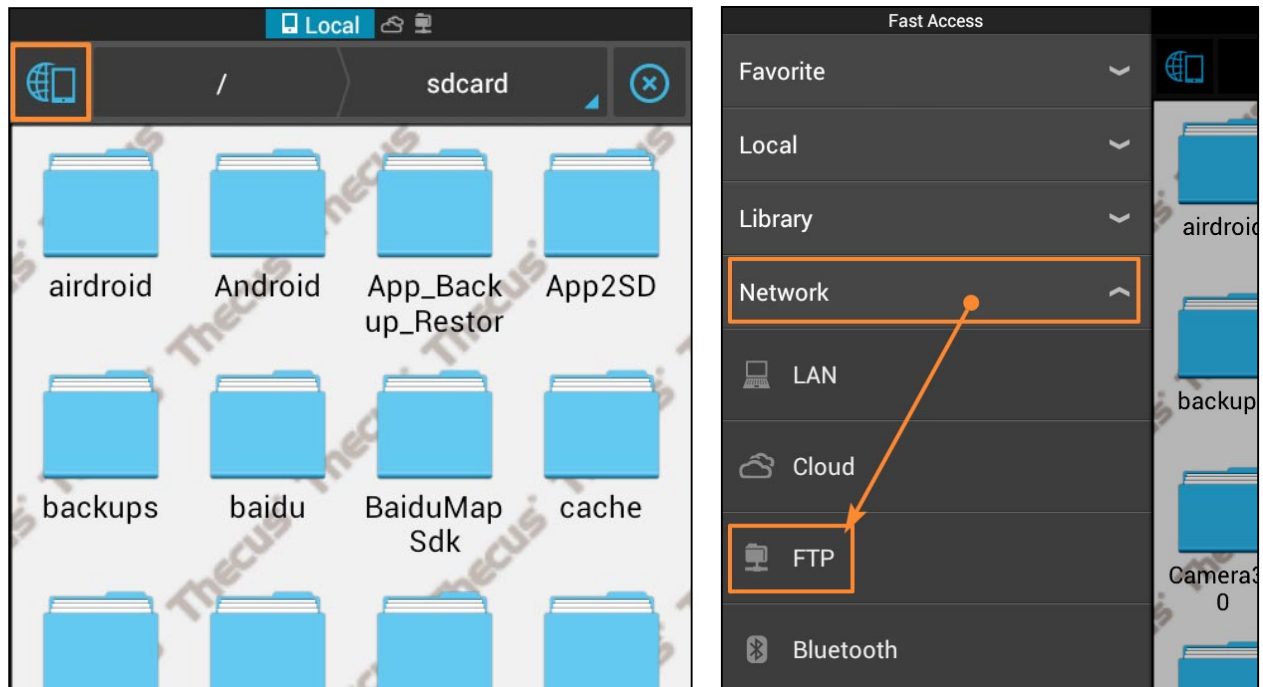


or

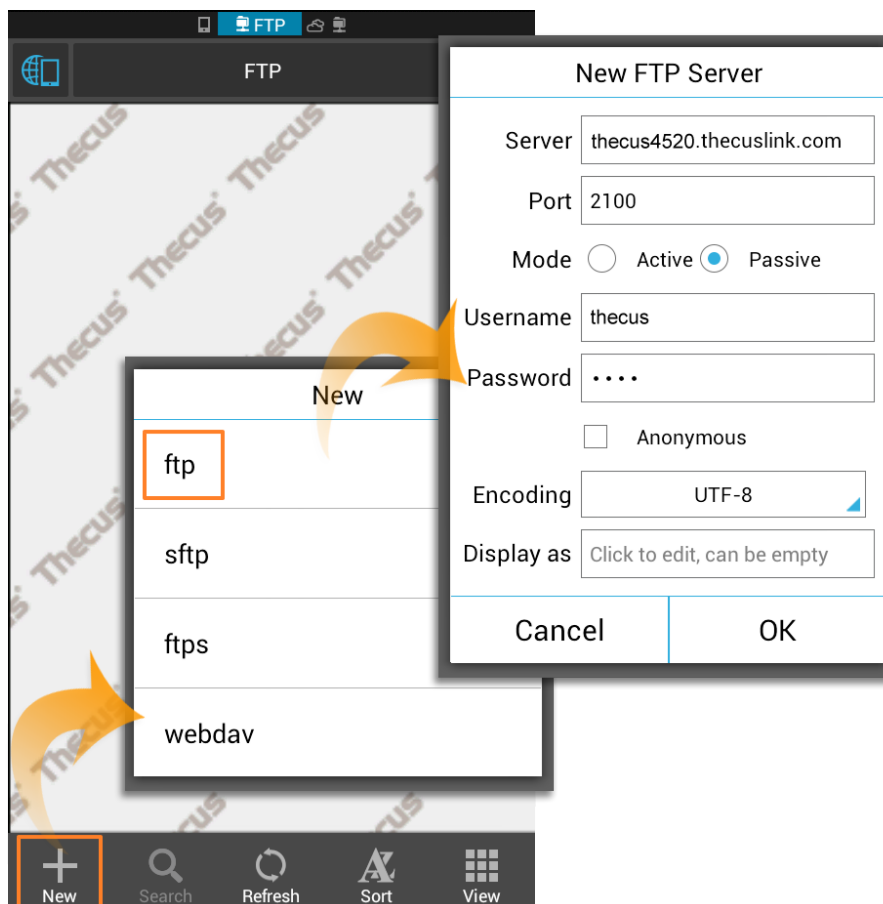
Find the [ES File Explorer](#) in the Google Play store and download and install the App.

❖ How to connect via FTP with a Thcus NAS

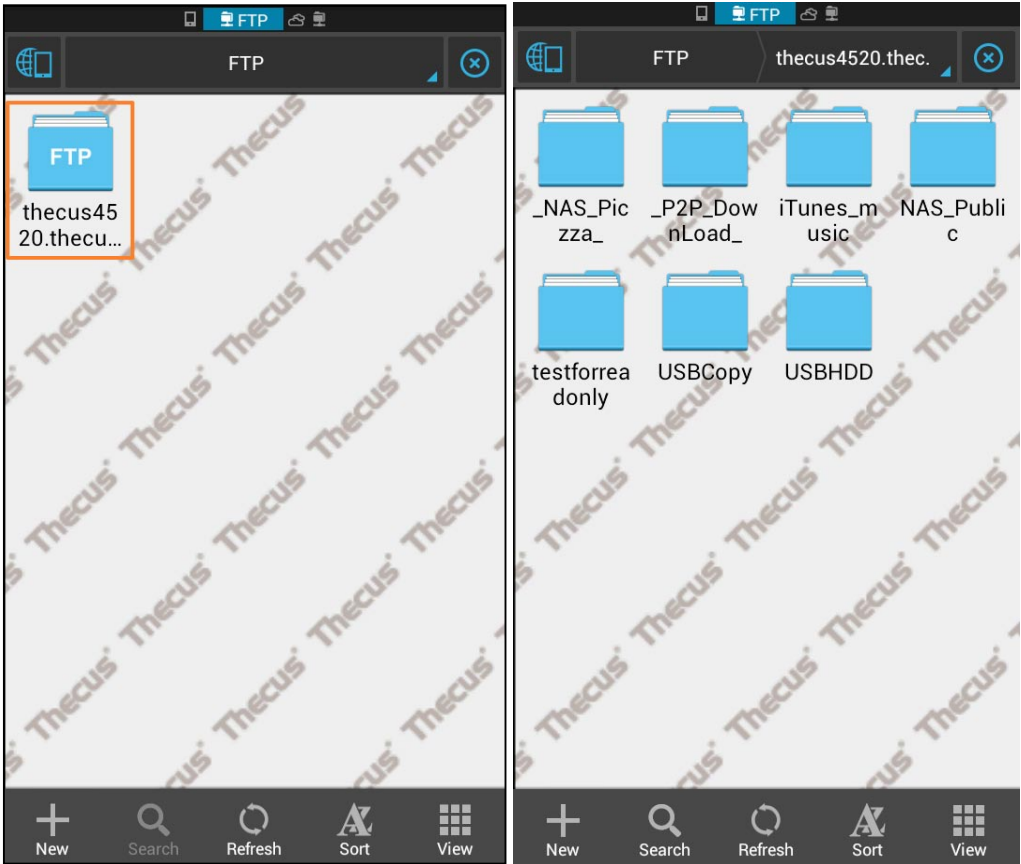
Step 1: Open the ES File Explorer App and select the upper left corner to open the 'Quick Navigation' menu.



Step 2: Click on "New" then select "ftp" and then enter the Thcus server address and the other information.



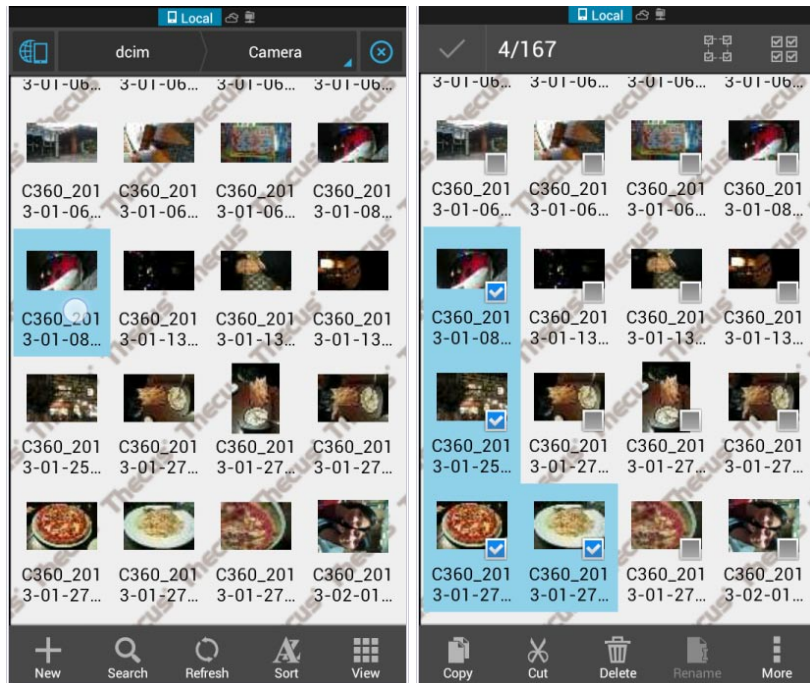
Step 3: You will then be connected via FTP to your Thecus NAS where you can upload and download files.



❖ ES Explorer upload and download instructions

- **Uploading files to the Thecus NAS**

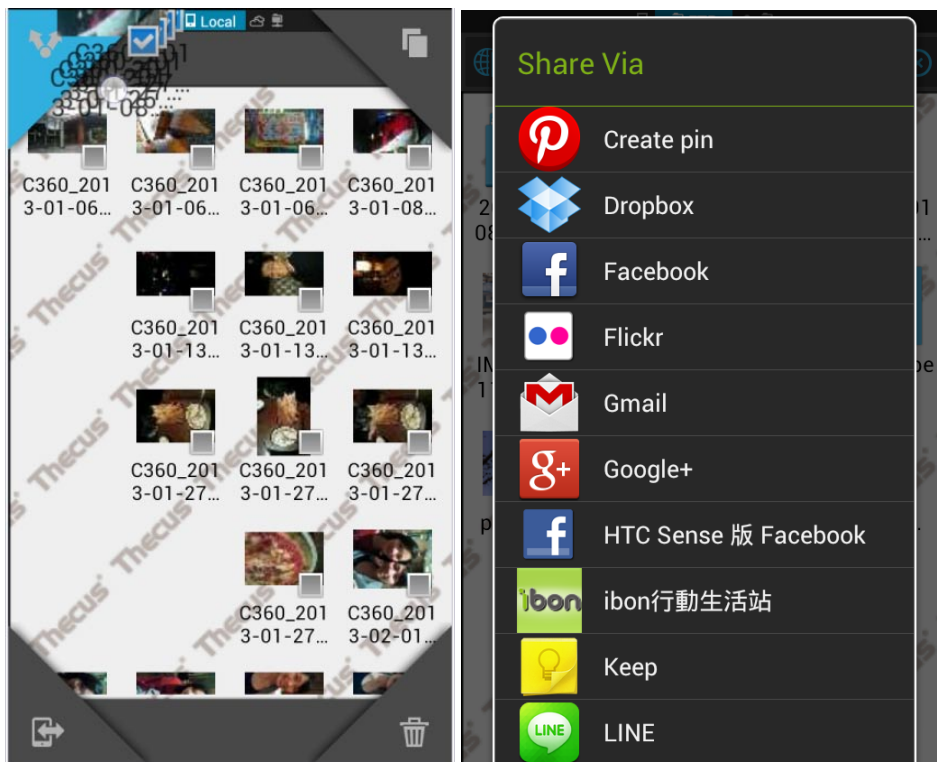
Step1: In the **Local** (local directory) you can select a file to be uploaded. After a long press (about 1 second), you will be able to multi-select multiple files to upload.



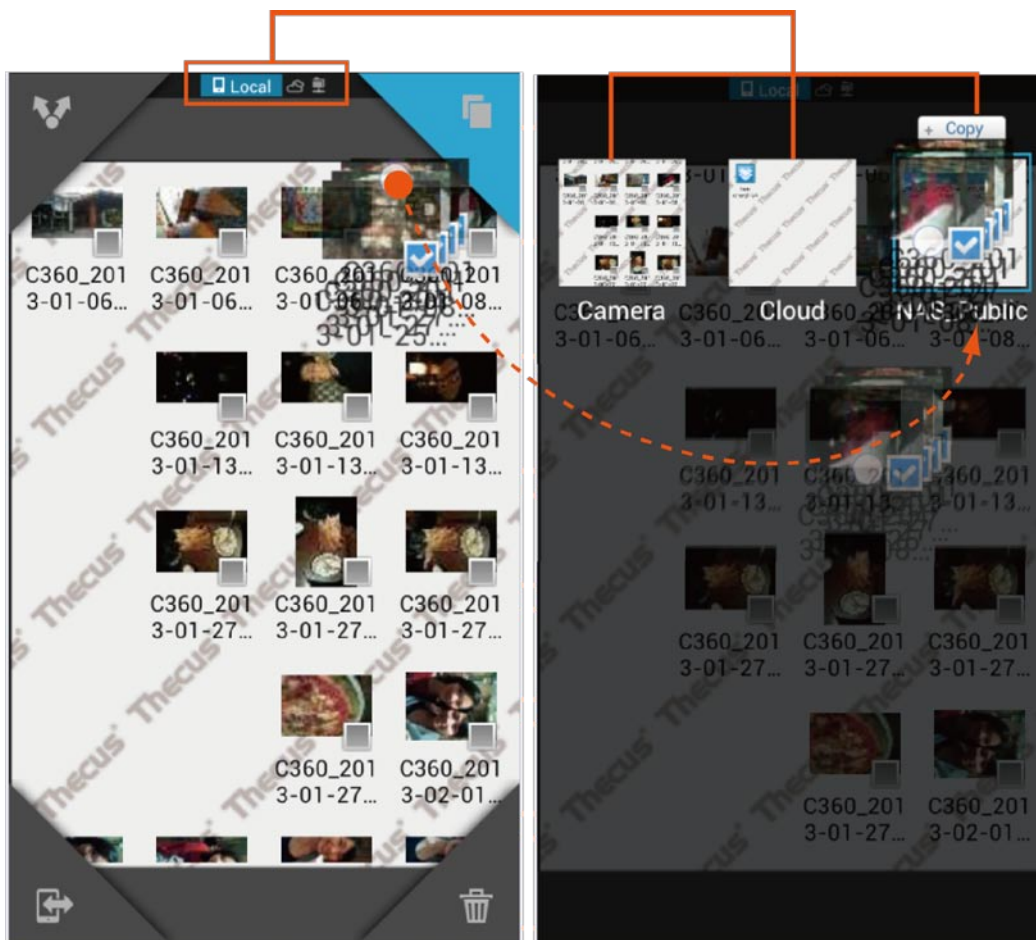
Step2: After you have selected the files in the multi-selection mode, you can then press and hold (do not release) and then drag the group of files to one of the four corners representing four different express actions:



1. **Sharing (Share):** Drag the files to the upper left corner to share to a social service or to another App.



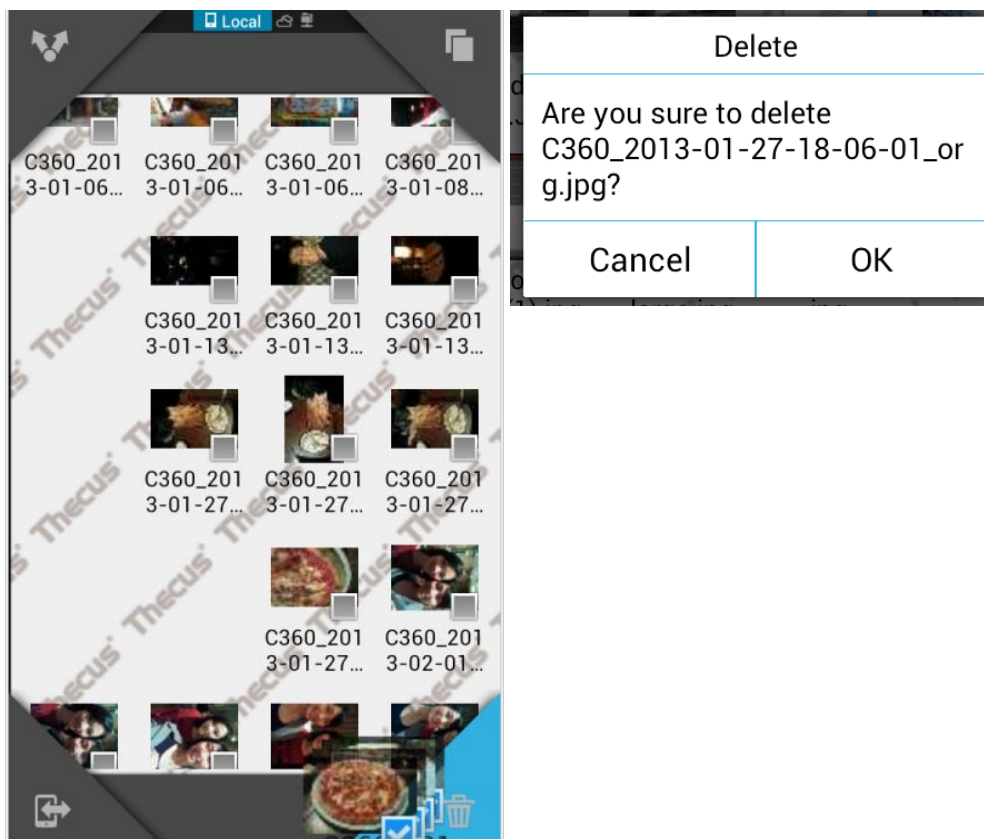
2. **Copy:** Drag the files to the upper right corner and do not let go until the selection page appears (as pictured right). Continue dragging the files to be copied to the desired tile.



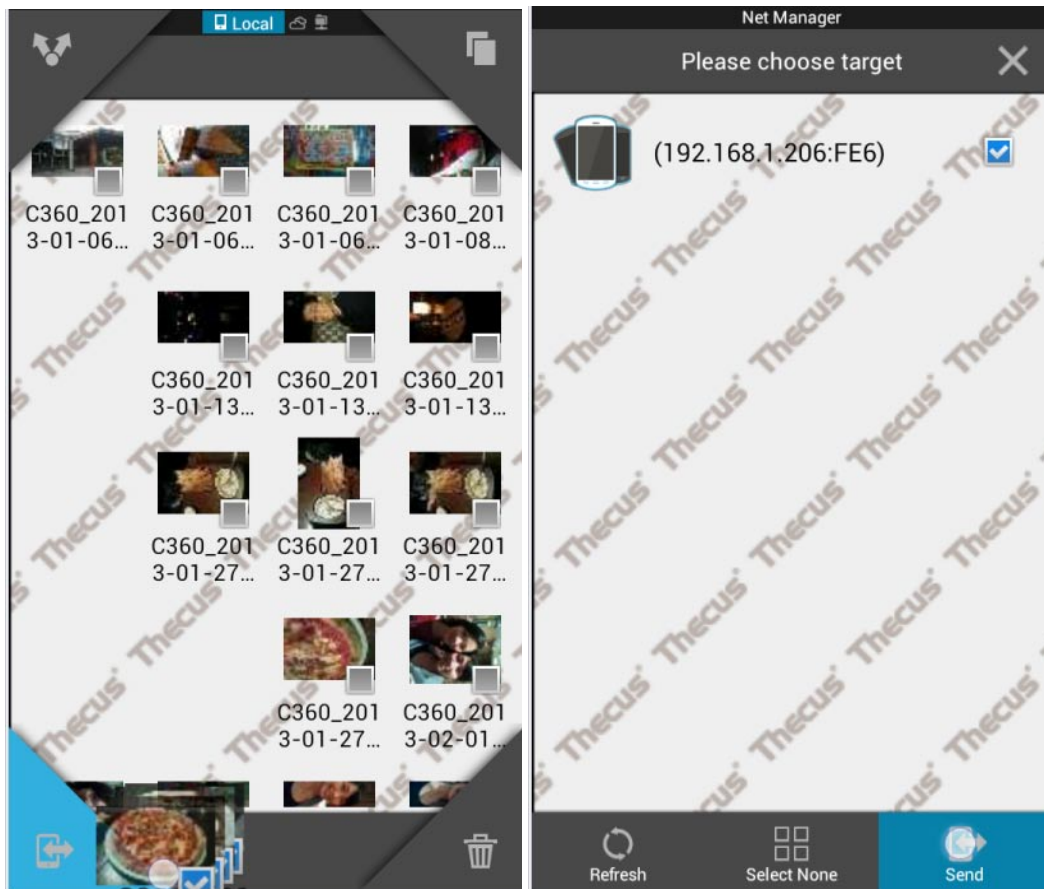
Click OK to copy the files. There will be a progress window showing the transfer. When it has completed successfully, a message will be displayed.




3. **Delete:** Deleting the selected files. Drag to the bottom right corner to delete the selected files.

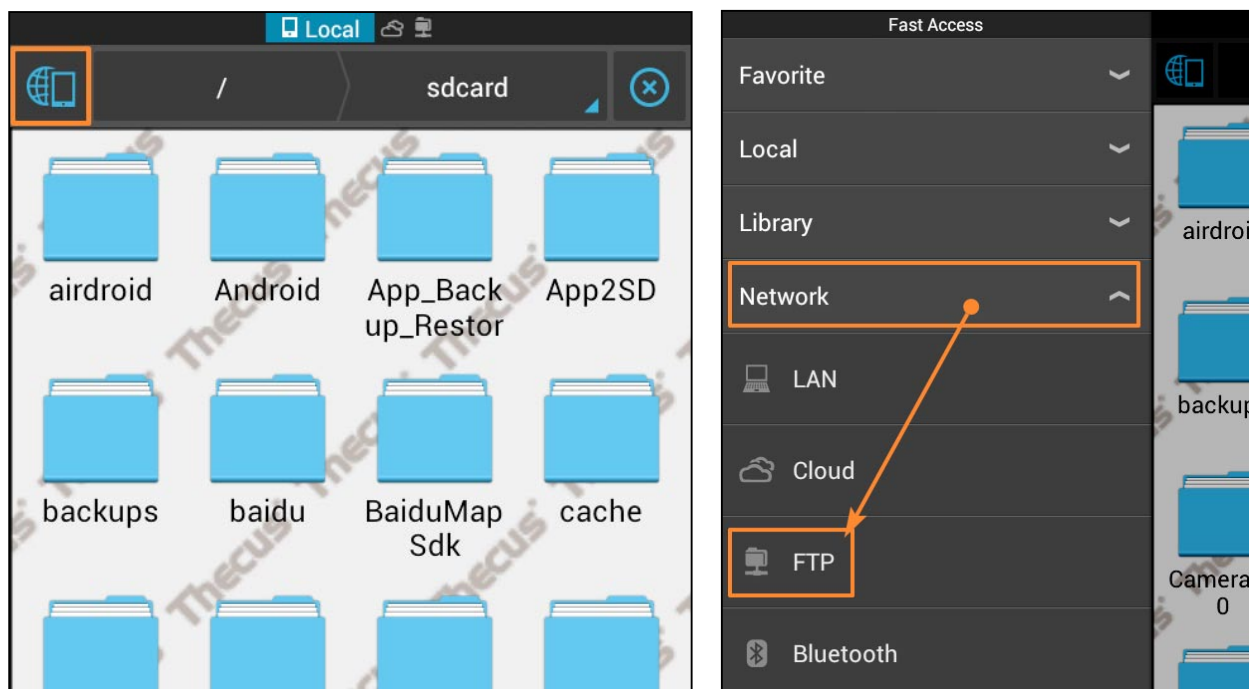


4. **Send:** On the bottom left corner, you can send the files to another installation of ES Explorer on another handheld device, but you will need to be using the same Wi-Fi network.

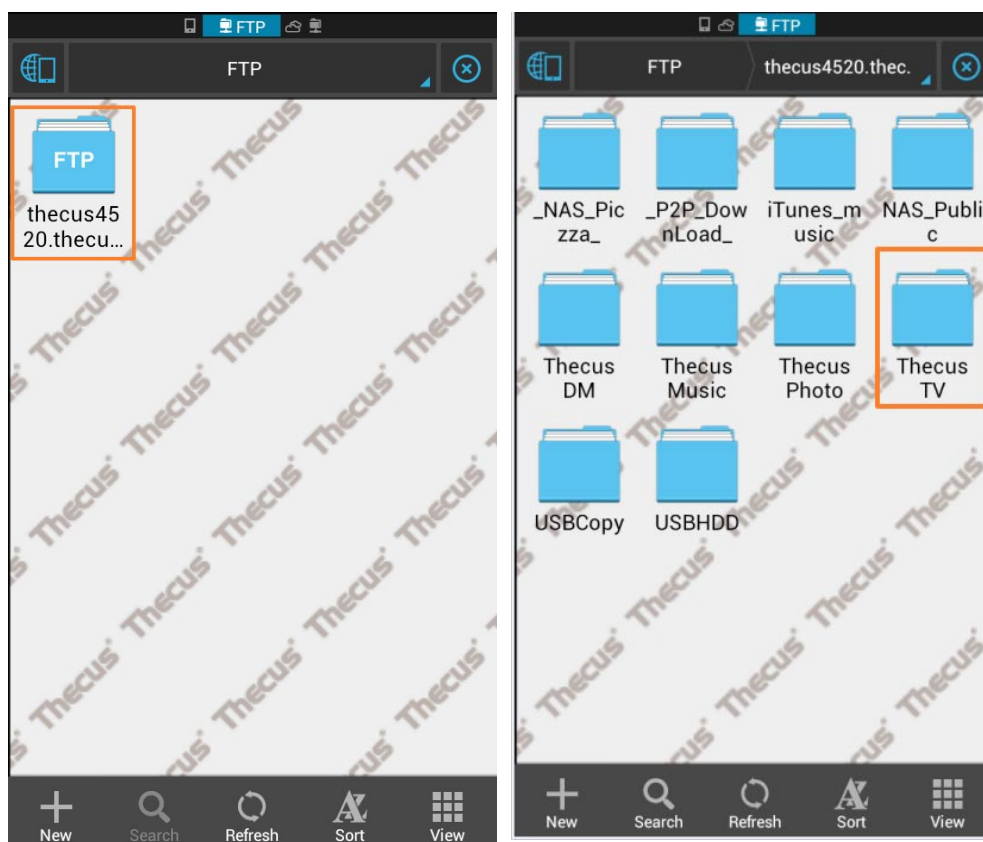



- **Downloading files from a Thcus NAS**

Step 1: Open the ES File Explorer App and then select the upper left corner to  open the 'Quick Navigation' menu and select FTP.



Step 2: Choose your Thcus NAS FTP server.



Step 3: To download a file, long press for about one second and release to enter the multi-select mode. Click on the bottom right corner  to select Copy and then select the file that you want from the Thecus file pathway to start the download.

