



ICY BOX IB-1817Ma-C31

External Type-C™ enclosure for M.2 NVMe SSD

Key features

- High-grade aluminium enclosure with innovative heatsink design
- Interface to host computer: USB 3.1 (Gen 2) Type-C™, up to 10 Gbit/s
- Supports PCIe 3.0 x2 data transfer rates of up to 1000 megabyte per second
- M-Key socket for NVMe SSDs, 22x 30/42/60/80 mm
- Provides an additional patented heatsink and thermal pad inside
- Activation of write protection via switch
- LED for power, access and write protection
- Supports Windows®, macOS®



Packing content

1x IB-1817Ma-C31 (drive not included), 1x Type-C™ to Type-C™ cable (20 cm), 1x Type-C™ to Type-A cable (20 cm), 1x Silicon thermal pad, 1x Heat sink, 1x Tool for write protection switch, 1x Screw driver, 1x Set of screws, 1x Quick installation guide

Fast and mobile

With the help of the external USB 3.1 Type-C™ enclosure IB-1817Ma-C31 you can take one NVMe card with you quickly and easily. It allows access to M.2 SSDs of up to 2 TB no matter to which host you connect it.

Technical data

| | |
|-----------------------------------|-------------------------|
| Model | IB-1817Ma-C31 |
| Article no. | 60612 |
| EAN code | 4250078169536 |
| Brand | ICY BOX |
| Colour | Silver |
| Material | Aluminium |
| Interface to host computer | USB 3.1 (Gen 2) Type-C™ |
| Transfer rate | Up to 10 Gbit/s |
| Length of cable | 20 cm |
| Socket | M-Key |
| M.2 card size | 22x 30/42/60/80 mm |
| M.2 interface | PCIe 3.0 x2 (NVMe) |
| Supported M.2 card keys | M.2 SATA M-Key |
| SSD capacity | Up to 2 TB |

Plug & Play

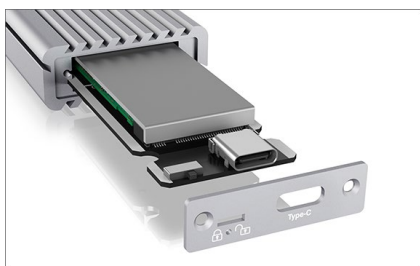
| | |
|-------------------------|------------------------------------|
| Cooling | Yes |
| LED | Passive |
| Chipset | Power, write protection and access |
| Power supply | JMS583 |
| Operating system | Bus powered |
| | Windows®, macOS® |

System requirements

Your host computer must have a USB Type C™ interface.
The IB-1817Ma-C31 also works with computers and notebooks with USB 3.0/2.0/1.1 Type-A interfaces.
The enclosure also works on devices with a Thunderbolt 3 interface with the transfer rate of 10 Gbit/s specified by USB 3.1 (Gen 2).
The Type-C™ interface can be connected with USB 3.0 or 2.0 standard in some notebooks and computers. The enclosure only supplies the full speed of 10 Gbit/s to USB 3.1 (Gen 2) Type-C™ interfaces. The following operating systems are supported: Windows®, macOS®

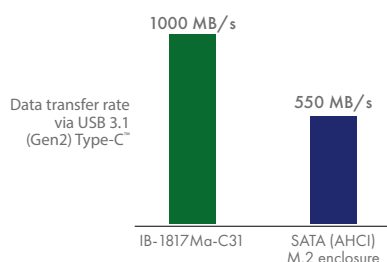


ICY BOX **IB-1817Ma-C31** External Type-C™ enclosure for M.2 NVMe SSD



Perfect cooling

The patented cooling plate transfers the resulting waste heat from the SSD to the housing and cools the SSD down optimally. This prevents the otherwise usual early reduction of the transfer rate to protect from overheating. With the IB-1817Ma-C31, data can be sent permanently from A to B at maximum transfer rate of up to 10 Gbit/s.



Your time is valuable.

The IB-1817Ma-C31 is compatible with M.2 cards of 30, 42, 60 and 80 mm length, operating system-independent and suitable for a variety of applications such as high-speed storage, cloning a drive or running a mobile operating system. All this happens with a data transfer rate with up to 1000 MB per second. Compared to data transfer with a SATA drive, a data volume of 50 gigabytes is now transferred in 50 seconds instead of 1:36 minutes.



Click - Safe

With the IB-1817Ma-C31, sensitive data on the installed M.2 SSD can be protected from changes by a switch and released again. The write protection switch can be moved to the desired position using the supplied mini tool and a small hand movement. Click - safe.

Logistical data

Packing unit: 40 Stk./carton
Total weight: 8.7 kg/carton
Gross weight (with packing): 0.205 kg
Net weight: 0.100 kg

Dimension/carton: 500x300x220 mm
Dimension (with packing): 25x100x200 mm
Dimension of article: 105x40x15 mm
Country of origin: China