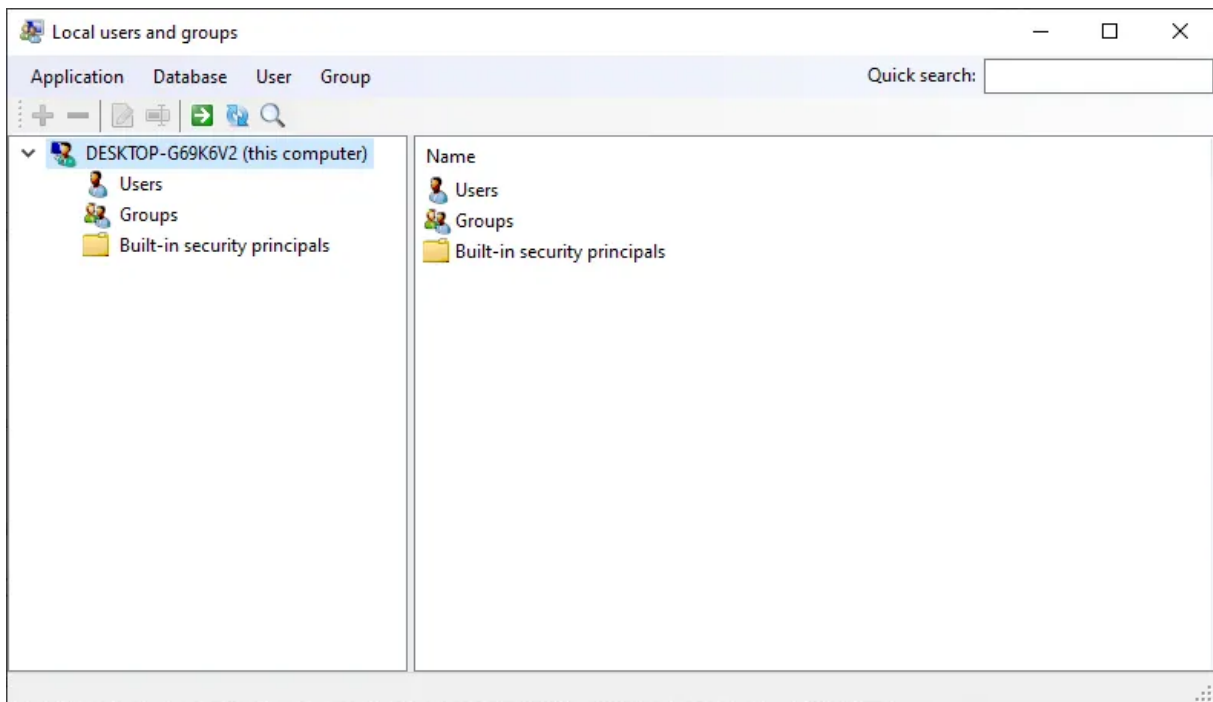
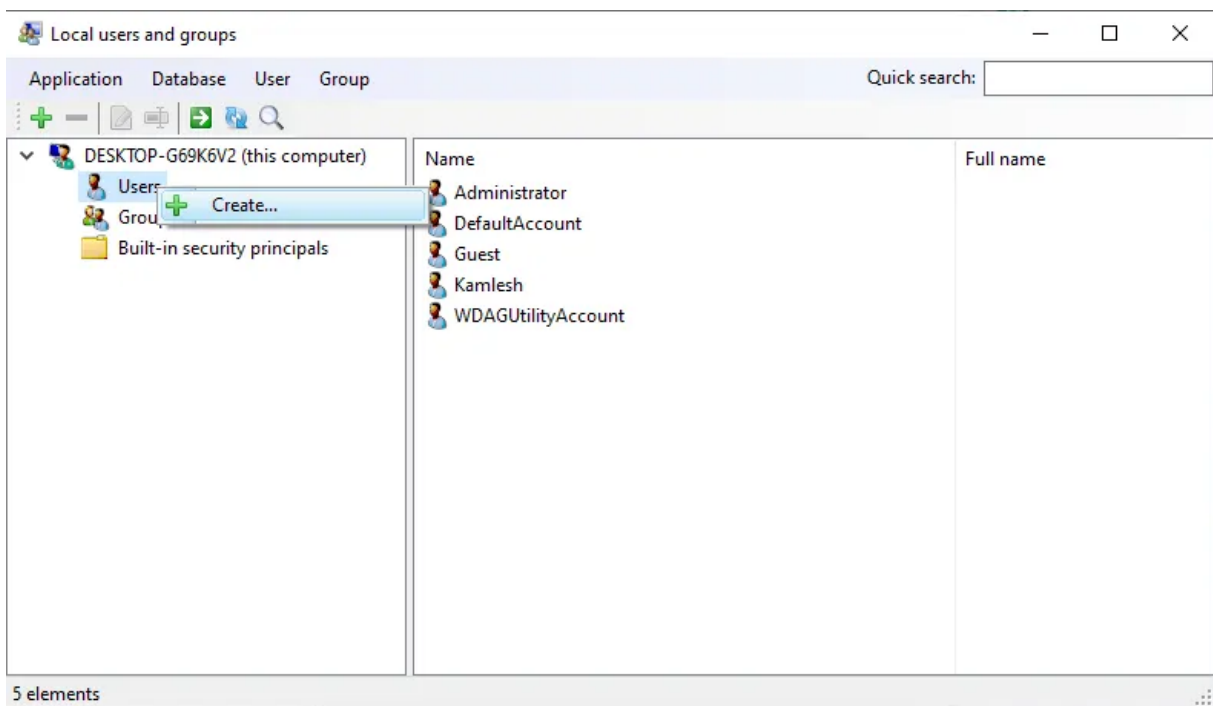


Step 2. Run the downloaded file on your Windows 11/10 Home.

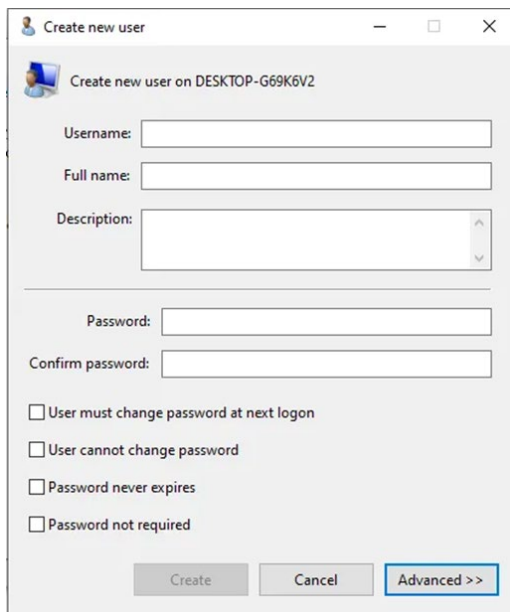
Step 3. It will get the following screen which is very similar to the built-in lusrmgr tool:-



Step 4. Under the Local users and groups console, you can create and manage users and groups. To create a user, right-click on the **Users** and select **Create** in the menu.

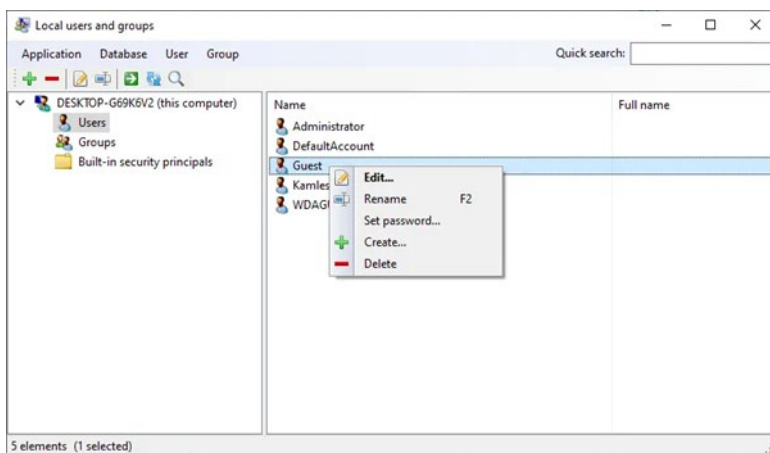


Step 5. The “**Create new user**” window will open. Fill in the details of a new user you want to create under Windows 11/10 and click the **Create** button.



The screenshot shows the 'Create new user' window. At the top, it says 'Create new user on DESKTOP-G69K6V2'. Below this are input fields for 'Username:', 'Full name:', and 'Description:'. Further down are 'Password:' and 'Confirm password:' fields. At the bottom, there are four checkboxes: 'User must change password at next login', 'User cannot change password', 'Password never expires', and 'Password not required'. At the very bottom are three buttons: 'Create', 'Cancel', and 'Advanced >>'.

Step 6. To manage an account already created under your Windows 11/10, select and right-click on an account. You can rename, set a password, and delete or edit the account.



WIN7