



**Stellar Phoenix  
Windows Data Recovery  
Professional 7.0**

**User Guide**

# Overview

**Stellar Phoenix Windows Data Recovery** is a complete solution to recover lost data from your hard disks and removable drives. It is a complete solution for all your data loss problems. The powerful scan engine of the software does a thorough scan of the selected storage device, shows a preview of files found during the scanning process and finally saves them to specified destination. Separate options to recover documents, folders, mails or multimedia files from the storage media is also available.

**Stellar Phoenix Windows Data Recovery** allows you to save scan information to resume recovery process from the same point, at a later stage. It also has an option to create an image of a complete hard drive or volume/partition on the drive. This image file can be used to recover lost data even when the actual hard drive is not available. This is very helpful, in case there is a probability of hard drive failure during the recovery process or the drive has lot of bad sectors.

Listed below are some of the new and key features of the product.

## What's New in this Version

- User Friendly Interface.
- Multiple DPI Supported (100%, 125%, 150%).
- Support of Windows 10 including all previous Windows OS.
- Improved Unicode support.
- Support to search specific type of files in a logical drive/specific folder.
- Support to search specific folder for lost & deleted data.
- Automatic switching from Quick Scan to deep scan if the result of quick scan is not up to mark.
- Faster & more efficient scan engine.
- Simultaneous Scan of multiple File System (NTFS, FAT, FAT16, FAT32 and ExFat) in a logical drive.
- Better & fast Quick scan engine for searching lost partition.
- Option to turn On/ turn Off preview of files while scanning is in progress.
- Enhanced Scanning Progress and Details scanning status- scanning status, Time elapsed and Time Left.

- In Advanced Settings : Enhanced Support of Add New Header/Edit Header.
- Improved preview support.
- Raw Recovery support of HD-MOV (Cannon Camera model).
- Raw Files Recovery is done automatically with advance search.

## **Key Features**

- Categorization of scanned results
- Preview of files before recovery
- Raw recovery of volumes and hard drives to search data based on signatures
- Recovers data from accidentally deleted volumes
- Recovers data from formatted volumes
- Recovers deleted files and folders
- Recovers from hard disk, removable media such as pen drives, memory cards etc
- Resume recovery option to recover data later on
- Supports 300 or more File types
- Support of all types of CD/DVD with CDFS, UDF, HFS+ file system
- Tabbed view of scanned Tree - File Type / Tree View / Deleted List
- User can add / edit their file types which makes it more robust
- User can create image of hard disk and volumes for recovery

# Getting Started

- Installation Procedure
- Launching the Software
- User Interface
- Ordering the Software
- Registering the Software
- Export License
- Updating the Software
- Stellar Support

# Installation Procedure

Before installing the software, please ensure that your system meets the following minimum system requirements:

## Minimum System Requirements:

- **Processor : Pentium Processors**
- **RAM : 1 GB minimum**
- **Hard Disk : 50 MB**
- **Operating Systems : Windows 10 / 8.1 / 8 / 7 / Vista / XP**

## To install the software:

1. Double-click **StellarPhoenixWindowsDataRecovery.exe** file and click **Run** to start the Setup Wizard. **Setup - Stellar Phoenix Windows Data Recovery** dialog box is displayed.
2. Click **Next** to proceed. **License Agreement** dialog box is displayed.
3. Select **I accept the agreement** option in the **License Agreement** dialog box. Click **Next**. **Select Destination Location** dialog box is displayed.
4. Specify a destination in the text box or click **Browse** to select a destination. Click **Next**. **Select Start Menu folder** dialog box is displayed.
5. Specify a destination in the text box or click **Browse** to select a destination. Click **Next**. **Select Additional Tasks** dialog box is displayed.
6. Select the required check boxes for creating desktop icon and quick launch icon of the software. Click **Next**.
7. In the **Ready to Install** dialog box, verify the settings. Click **Back** to make any changes, or click **Install** to install the software.
8. After successful installation of the software, the "**Completing the Stellar Phoenix Windows Data Recovery Setup Wizard**" screen opens. Click **Finish**.

**Note:** Clear **Launch Stellar Phoenix Windows Data Recovery** check box to prevent the software from launching automatically.

# Launching the Software

## To launch Stellar Phoenix Windows Data Recovery in Windows 10:

- Click Start icon -> All apps -> **Stellar Phoenix Windows Data Recovery** -> **Stellar Phoenix Windows Data Recovery**. Or,
- Double click **Stellar Phoenix Windows Data Recovery** icon on the desktop. Or,
- Click **Stellar Phoenix Windows Data Recovery** tile on the home screen.

## To launch Stellar Phoenix Windows Data Recovery in Windows 8.1 / 8:

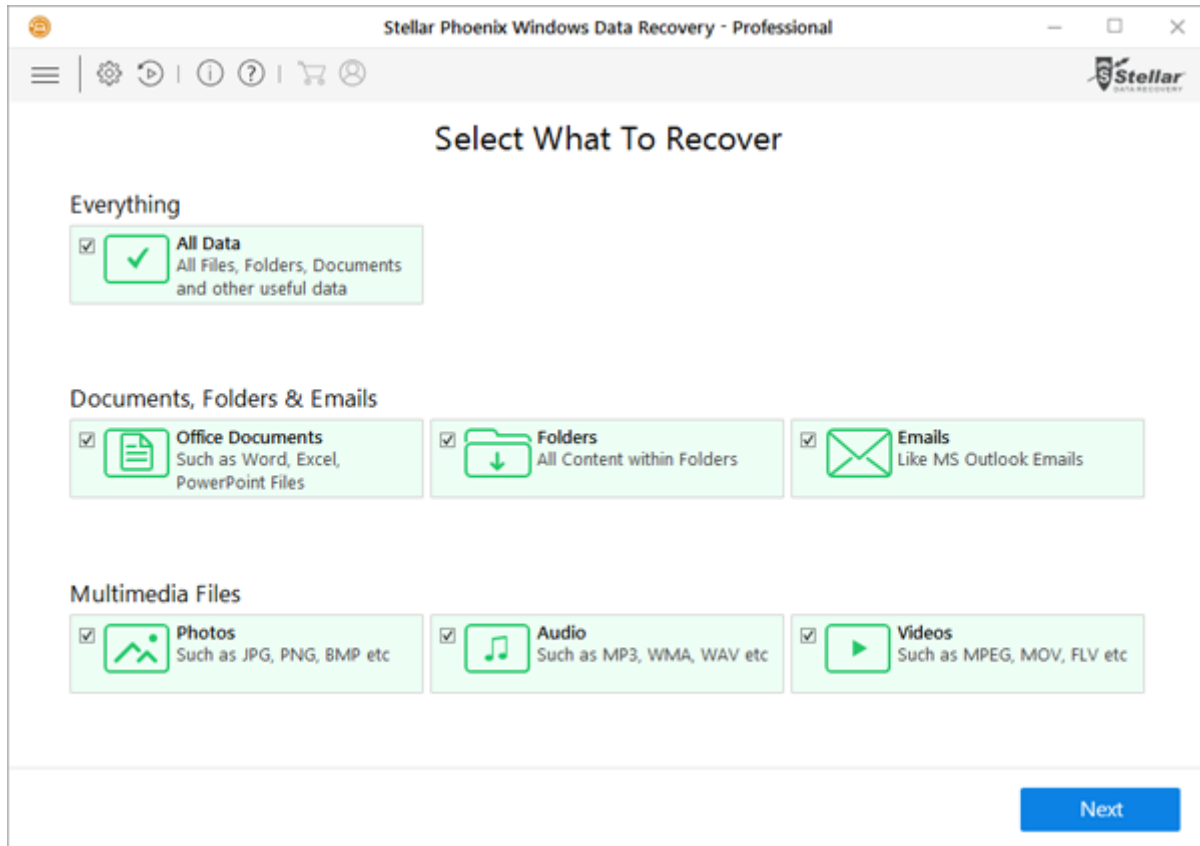
- Click **Stellar Phoenix Windows Data Recovery** tile on the home screen. Or,
- Double click **Stellar Phoenix Windows Data Recovery** icon on the desktop.

## To launch Stellar Phoenix Windows Data Recovery in Windows 7 / Vista / XP:

- Click Start -> Programs -> **Stellar Phoenix Windows Data Recovery** -> **Stellar Phoenix Windows Data Recovery**. Or,
- Double click **Stellar Phoenix Windows Data Recovery** icon on the desktop. Or,
- Click **Stellar Phoenix Windows Data Recovery** icon in Quick Launch.

# User Interface

Main user interface of **Stellar Phoenix Windows Data Recovery** software is quiet simple, easy to use and effective. On launching the software **Select What To Recover** screen is displayed:



Main user interface contains 3 major recovery options:

1. **Everything** : This option recovers all the data from a particular drive or location selected for recovery.
2. **Documents, Folders & Emails** : This option recovers office documents, files, folders and mails from various email clients.
3. **Multimedia Files** : Select this option to recover photos, audio and videos.

It also has user-friendly buttons to quickly access the menus.

# Buttons

Some other general buttons/icons that you will encounter while using **Stellar Phoenix Windows Data Recovery** software are as follows:



**Home**

Click this button to return to main screen at any point.



**Advanced Settings**

Click this button to configure general, file types and recovery settings.



**About**

Click this button to display information about the application.



**Back**

Click this button to move to previous screen from current window.



**Help**

Click this button to open user help guide.



**Buy Online**

Click the button to buy the software online.



**Register**

Click this button to register the software.

**Next**

Click this button to move to the next window.

**Recover**

Click this button to save the recovered data.

**Scan**

Click this button to start the scanning process.

Stop


Click this button to stop the scanning process at any time.

# Ordering the Software

To know more about **Stellar Phoenix Windows Data Recovery**, click [here](#).

You can purchase **Stellar Phoenix Windows Data Recovery** software online. For pricing details and to place an order, visit <http://www.stellarinfo.com/disk-recovery/WDR-PRO/buy-now.php>

Alternatively, if you have already downloaded and installed the demo version of the software, click directly

on the  (*Buy*) button on the main user interface.

# Registering the Software

The demo version is just for evaluation purpose and must be eventually registered to use the full functionality of the software. The software can be registered using the Registration Key which you will receive via email after purchasing the software.

## To register the software:

1. Run demo version of **Stellar Phoenix Windows Data Recovery** software.
2. On main user interface, click **Register** option. *Online Activation* window is displayed as shown below:




3. If you don't have the registration key, click **Click here** link in the window to go online and purchase the product.
4. Once the order is confirmed, a Registration Key will be sent to the email provided.
5. Type the **Registration Key** (received through email after purchasing the product) and click **Register** button (Please ensure that you have an active Internet connection).
6. The software would automatically communicate with the license server to verify the entered key. If the key you entered is valid, software will be registered successfully.
7. '**Stellar Phoenix Windows Data Recovery Activated Successfully**' message is displayed after the process is completed successfully. Click **OK**.

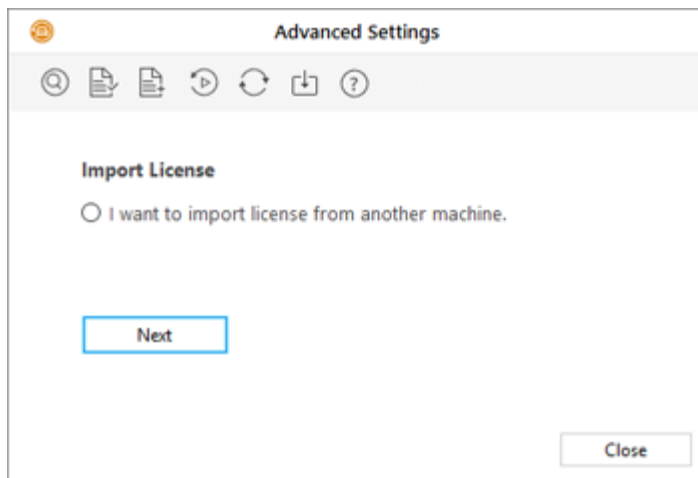
# Export License

**Stellar Phoenix Windows Data Recovery** allows you to export the license of the registered software to another computer on which you want to run the software with full functionality. This operation deactivates the product on your current computer so it can be reactivated on the new computer.

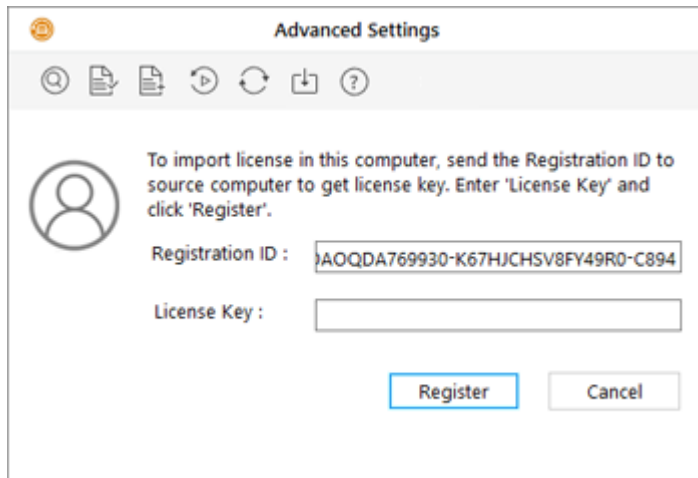
**To export a software license from one computer to another, please follow the specific steps below:**

## On Target Computer:


1. Run demo version of the software.
2. Click **Advanced Settings** button.
3. Click **Import License**  button from **Advanced Settings** window.

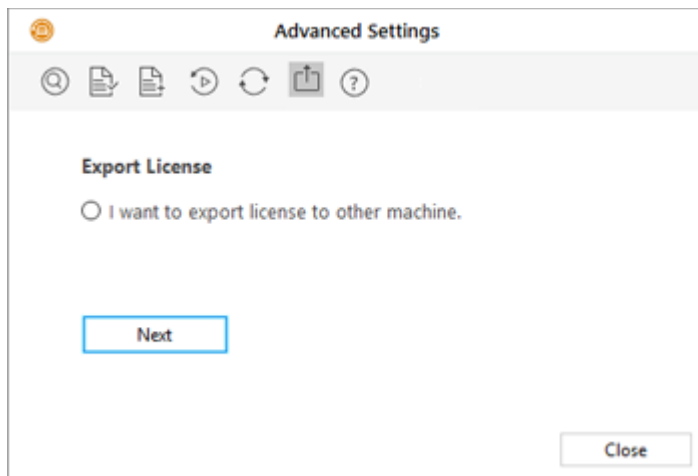


4. Select '**I want to import license from another machine**' and click **Next**.
5. An **Import License** dialog box will appear displaying **Registration ID** in its respective field.

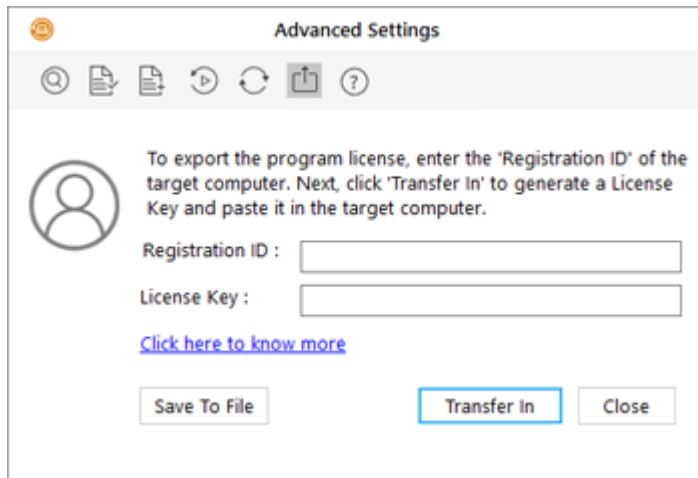


#### On Source Computer:

1. Run registered version of **Stellar Phoenix Windows Data Recovery** software.
2. Click **Advanced Settings** button.
3. Click **Export License**  button from **Advanced Settings** window.



4. Select 'I want to export license to other machine'. Click **Next**.



4. In **Export License** dialog box copy the **Registration ID** displayed on the Target Computer in the field of Registration ID on the Source Computer.
5. To get your License Key, click **Transfer In** button on Source Computer. This will generate a License Key.
5. You can also save the License Key generated on the source computer. Click **Save to File** button to save the Registration ID and the License Key. In **Browse for Folder** dialog box, select the location where you want to save the details. Click **OK**.
6. '**License Key has been saved successfully**' message is displayed after the saving process is completed successfully. Click **OK**.

This will deactivate the product on Source Computer and you will no longer be able to use the software anymore on this computer.



#### **On Target Computer:**

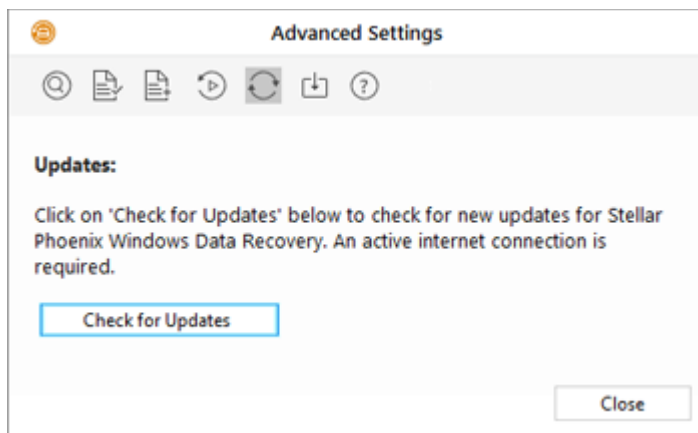
1. Type the **License Key** which you have generated on the Source Computer in the provided field of License Key.
2. Click **Register** to complete the activation process.
3. '**Stellar Phoenix Windows Data Recovery Activated Successfully**' message is displayed after the process is completed successfully. Click **OK**.

# Updating the Software

Stellar Phoenix Update Wizard keeps your copy up-to-date. The wizard runs the update process and automatically checks for updates. You need an active internet connection to check for updates using Update option of the application. Using **Update** option, you can check for both, latest minor and major versions available online. You can easily download minor versions using the update wizard. However, you need to purchase any major version updates whenever they are available.

## To start Stellar Phoenix Update Wizard:

1. Run **Stellar Phoenix Windows Data Recovery** software.
2. On main screen, click **Advanced Settings**  button.
3. In **Advanced Settings** menu, click **Update**  button.



4. From **Updates** dialog box select **Check for Updates** option.
5. '**Stellar Phoenix Update Wizard**' window pops up. Click **Next** to proceed.
6. The wizard will start searching for the latest updates and if it finds any new version, a window will pop up indicating the availability an update.
7. Click **Next** and the software will start downloading update files from the server. When the process is complete, the software will updated to the latest version.

## Live Update may not happen due to following reasons:

- Internet connection failure

- Unable to download configuration files
- Unable to locate updated files or version
- Unable to locate executable file



**Tip:** *You need to purchase the major version updates of the software, whenever they are available.*

# Stellar Support

Our Technical Support professionals will provide solutions for all your queries related to Stellar Products.

You can either **Call Us** or **Go Online** to our support section at <http://stellarinfo.com/support/>

For **price details** and to **place an order**, <http://www.stellarinfo.com/disk-recovery/WDR-PRO/buy-now.php>

**Chat Live** with an **Online technician** at <http://stellarinfo.com/support/>

Search in our extensive **Knowledgebase** at <http://www.stellarinfo.com/support/kb/>

**Submit enquiry** at <http://www.stellarinfo.com/support/enquiry.php>

**E-mail to Stellar Support** at [support@stellarinfo.com](mailto:support@stellarinfo.com)

## Stellar Support Helpline

### Monday to Friday [ 24 Hrs. a day ]

USA (Toll free- Pre Sales Queries)	+1-877-778-6087
USA (Post Sales Queries)	+1-732-584-2700
UK (Europe)	+44-203-026-5337
Australia & Asia Pacific	+61-280-149-899
Netherlands Pre & Post Sales Support	+31-208-111-188
Worldwide	+91-124-432-6777
Email Orders	<a href="mailto:orders@stellarinfo.com">orders@stellarinfo.com</a>

# Recover Data

**Stellar Phoenix Windows Data Recovery** provides you different options to recover your data. To recover data, you have to first scan the hard disk or volume. If you want to recover data using a previously scanned information or an image file, **Stellar Phoenix Windows Data Recovery** has an option of scanning them as well. After scanning, you can preview scanned files before recovery. You can also filter, find, and select the files you want to recover. You can then recover and save selected files to a destination folder of your choice.

With **Stellar Phoenix Windows Data Recovery** you can recover specific data. The software provides the following recovery options:

- **Everything** - This option recovers complete data from the selected hard drive or storage media. All documents, files and folders present or deleted from the drive/media can be recovered using this option.
- **Documents, Folders and Emails** - Use to option to recover lost or deleted documents, folders and their content and mail items.
- **Multimedia Files** - Using this option you can recover deleted or lost multimedia files like photos, audios and videos.

The software also allows you to select any connected drive or a specific location on a drive or storage media connected to the system. Following selection options are provided by the software:

- **Common Locations** - Common Locations include Desktop, My Documents and Choose Location.
- **Connected Drives** - These include all the drives and external storage media connected to the system.
- **Other Locations** - These include lost or deleted partitions and existing disk images.

You can also recover data from deleted and lost volumes of your computer's hard disk. **Recover Lost Partition** option will list all volumes that have been deleted from your hard disk.

- Scan Existing Volume
- Scan CD/DVD
- Save Scan Information
- Preview Scan Result

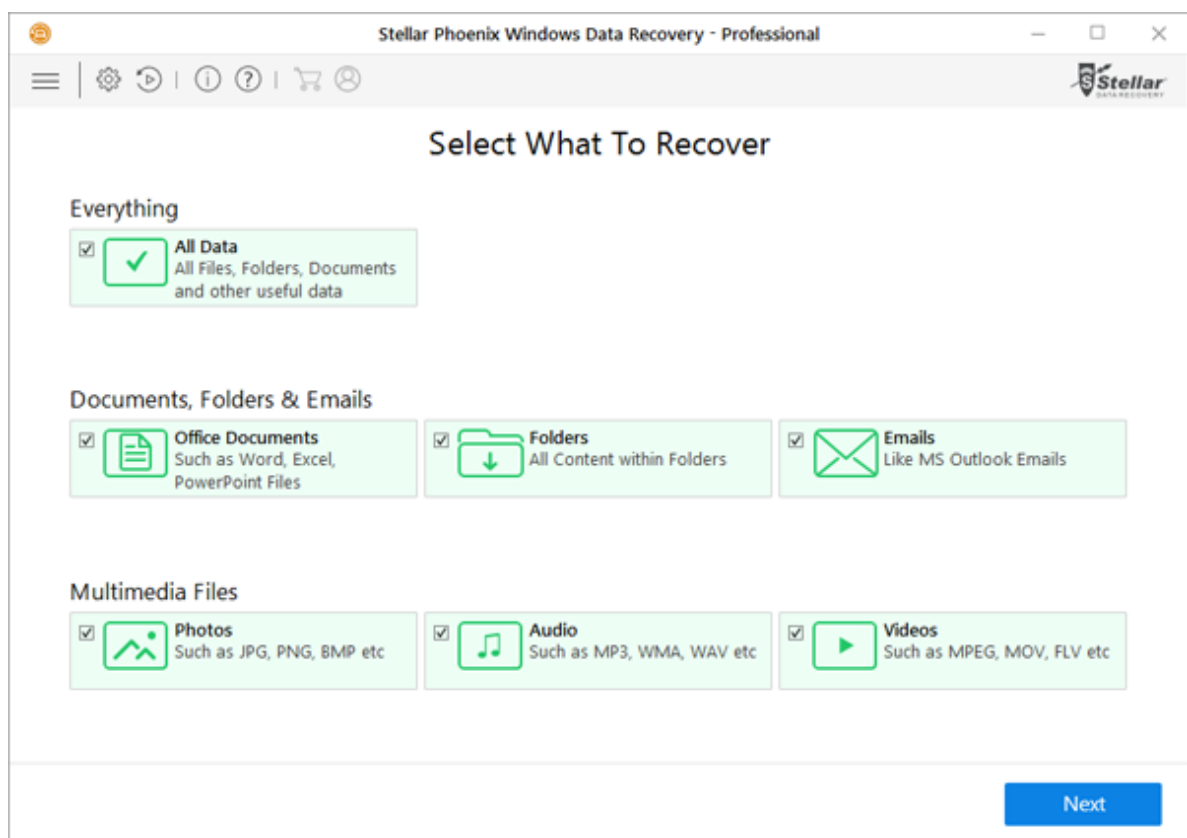
- Recover Files

# Scan Existing Volume

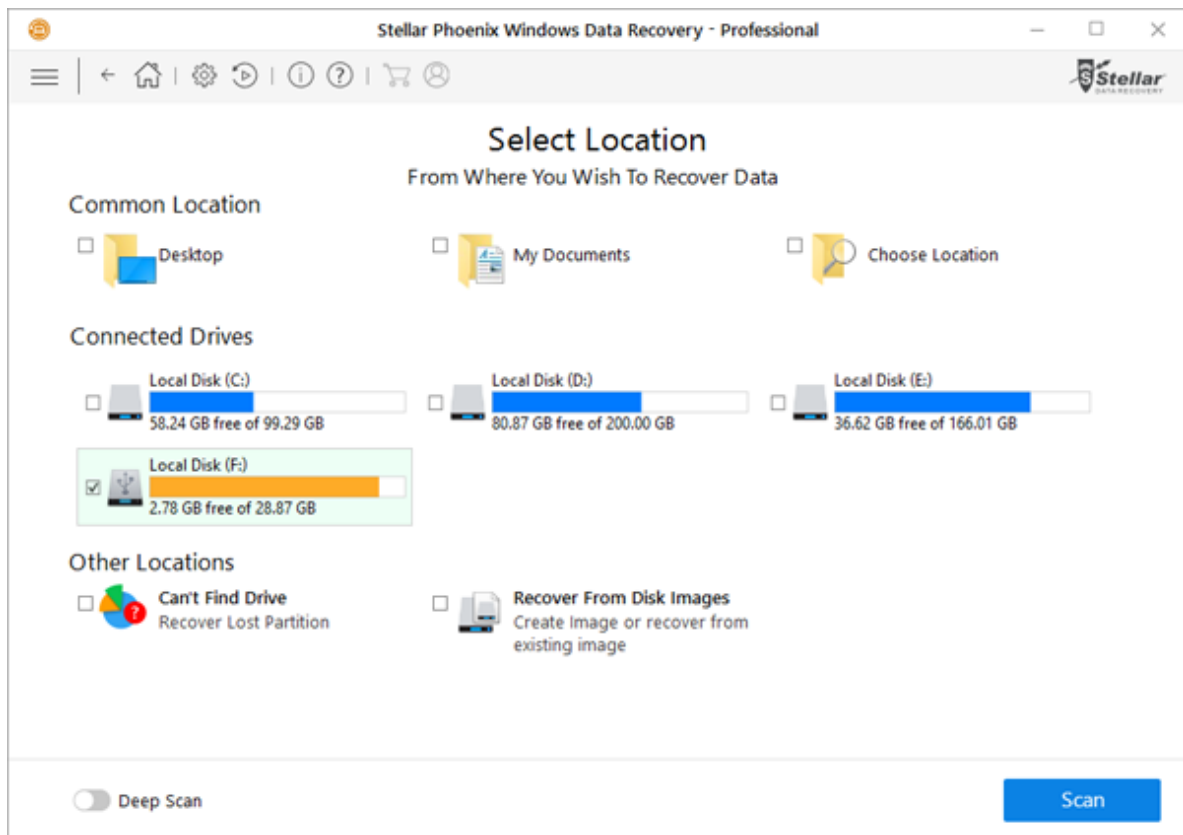
With **Stellar Phoenix Windows Data Recovery** you can recover your deleted or lost data from the hard drive or external storage media connected to the system. Almost all data of the volume can be found by performing recovery on selected volume or removable media. **NTFS, FAT, FAT16, FAT32 and ExFat** file systems are supported by the application.

## To Scan Existing Volume:

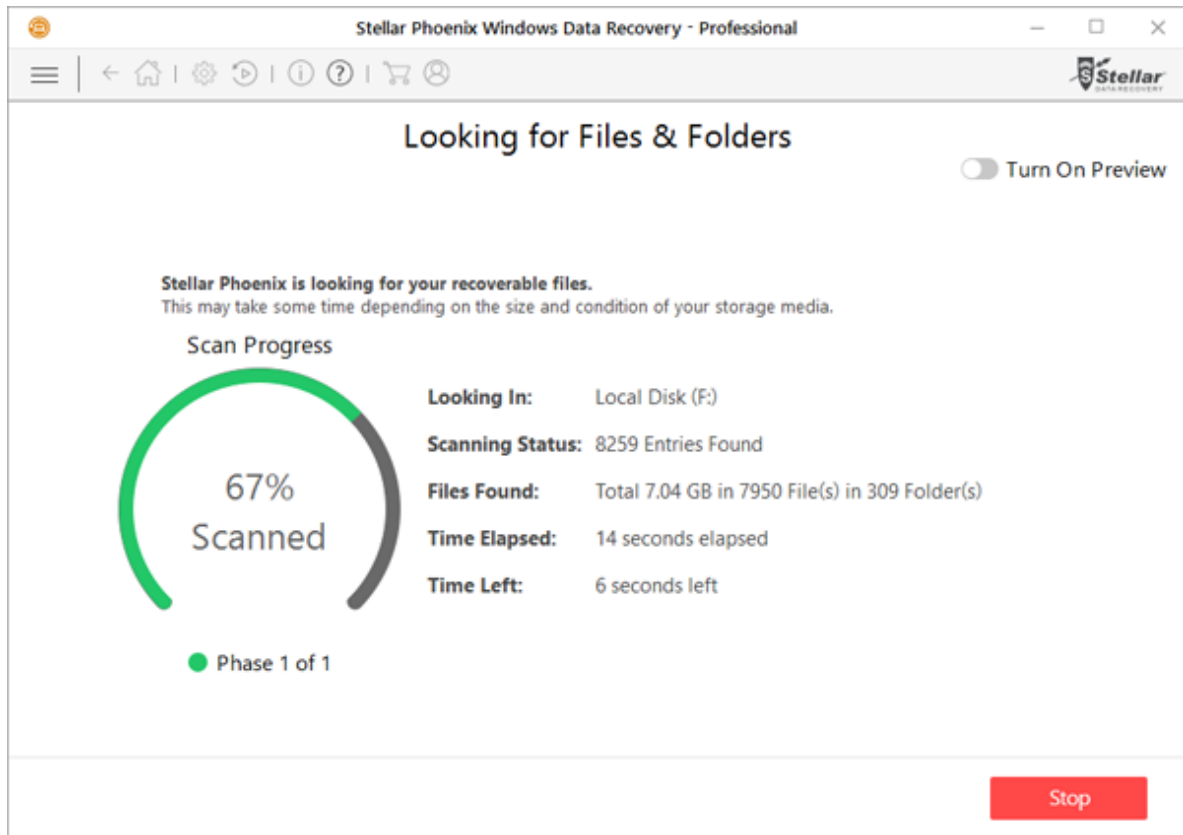
1. Run **Stellar Phoenix Windows Data Recovery**.
2. From **Select What to Recover** screen, select the type of data i.e. **Everything**, **Documents**, **Folders & Emails** or **Multimedia Files**, you want to recover.



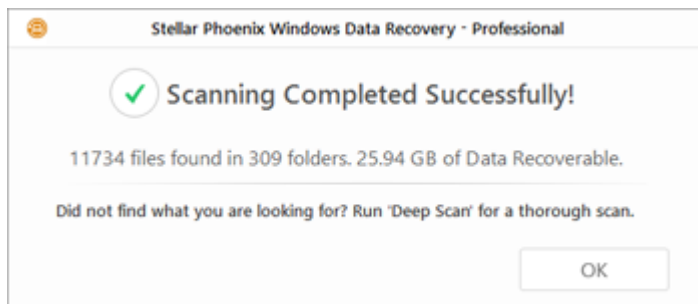
3. Click **Next**.
4. From **Select Location** screen, select a location from **Common Locations** or any of the **Connected Drives**. In case you want to scan a specific folder, from **Common Locations** select **Choose Location**. Browse to any desired location, select a folder you want to scan and click **Select Folder**.



- Click **Scan**. A screen showing the scanning process is displayed. Click **Stop** to stop the scan at any point.



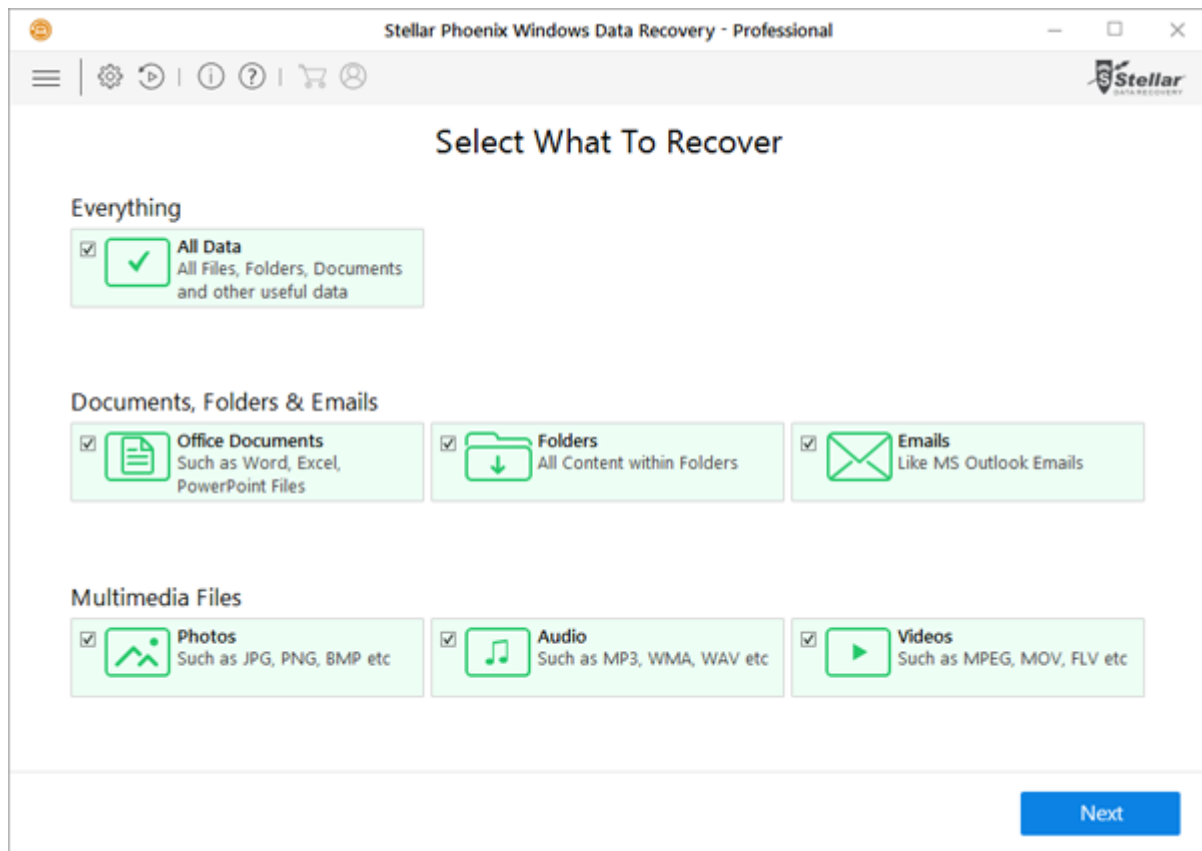
6. Once the scanning process is completed, details of the files and folder found are displayed in a dialog box as shown below:



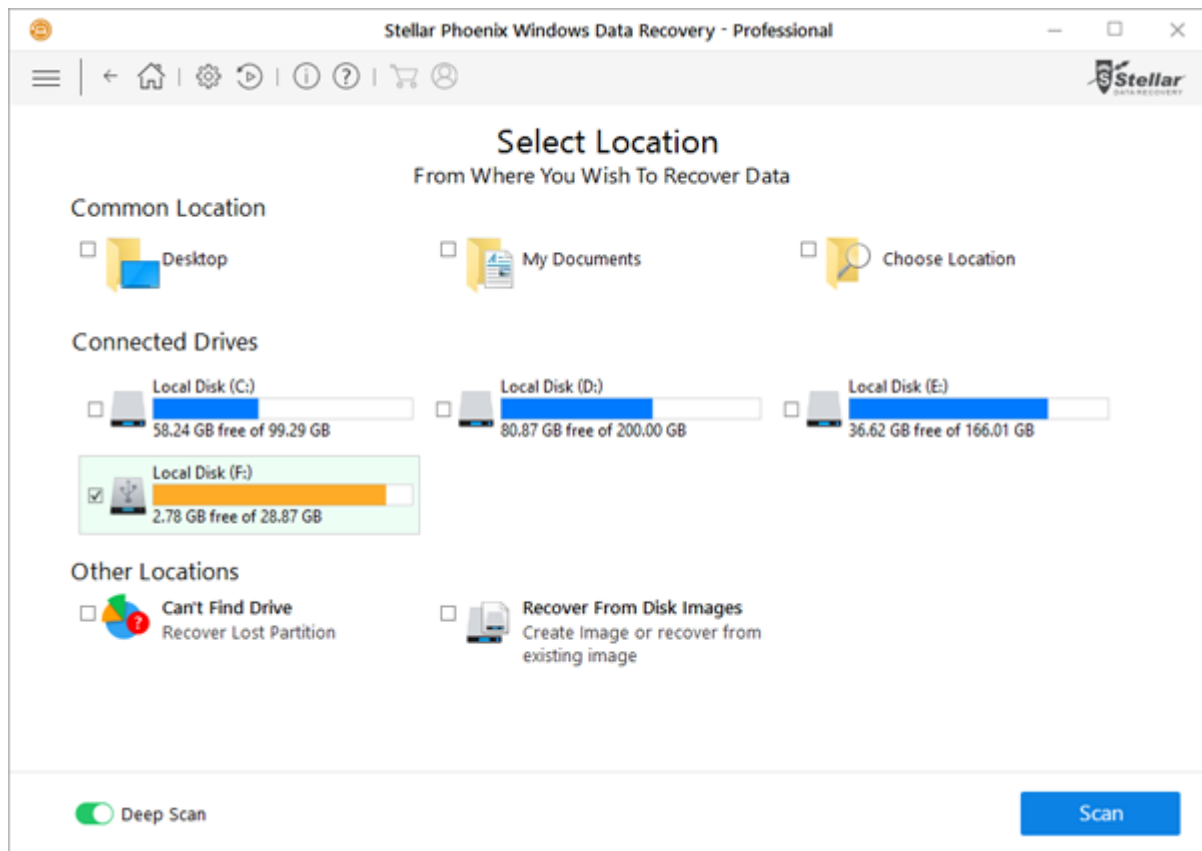
### Deep Scan an Existing Volume:

Running deep scan enables you to scan the selected volume thoroughly, when you are unable to locate data that you want to recover.

1. Run **Stellar Phoenix Windows Data Recovery**.
2. From **Select What to Recover** screen, select the type of data i.e. **Everything**, **Documents**, **Folders & Emails** or **Multimedia Files**, you want to recover.



3. Click **Next**.
4. From **Select Location** screen, select a location from **Connected Drives**.
5. Enable deep scan which is on bottom left of your screen.



6. Click **Scan**. A screen showing the scanning process is displayed
7. Once the scanning process is completed, details of the files and folder found are displayed in a dialog box

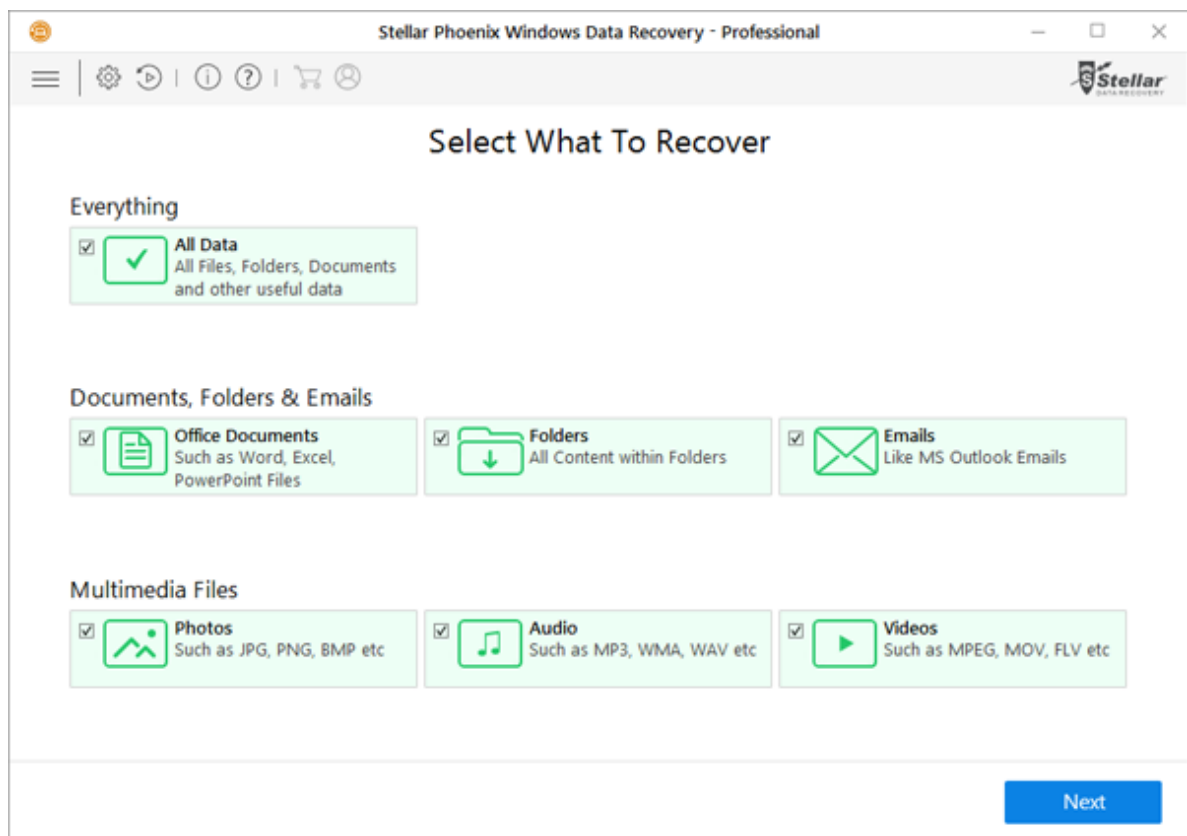
**Note:** You can select only one volume at a time for recovery. Deep scan is applicable only for connected drive. You can disable deep scan if you want to perform Quick scan

# Scan CD/DVD

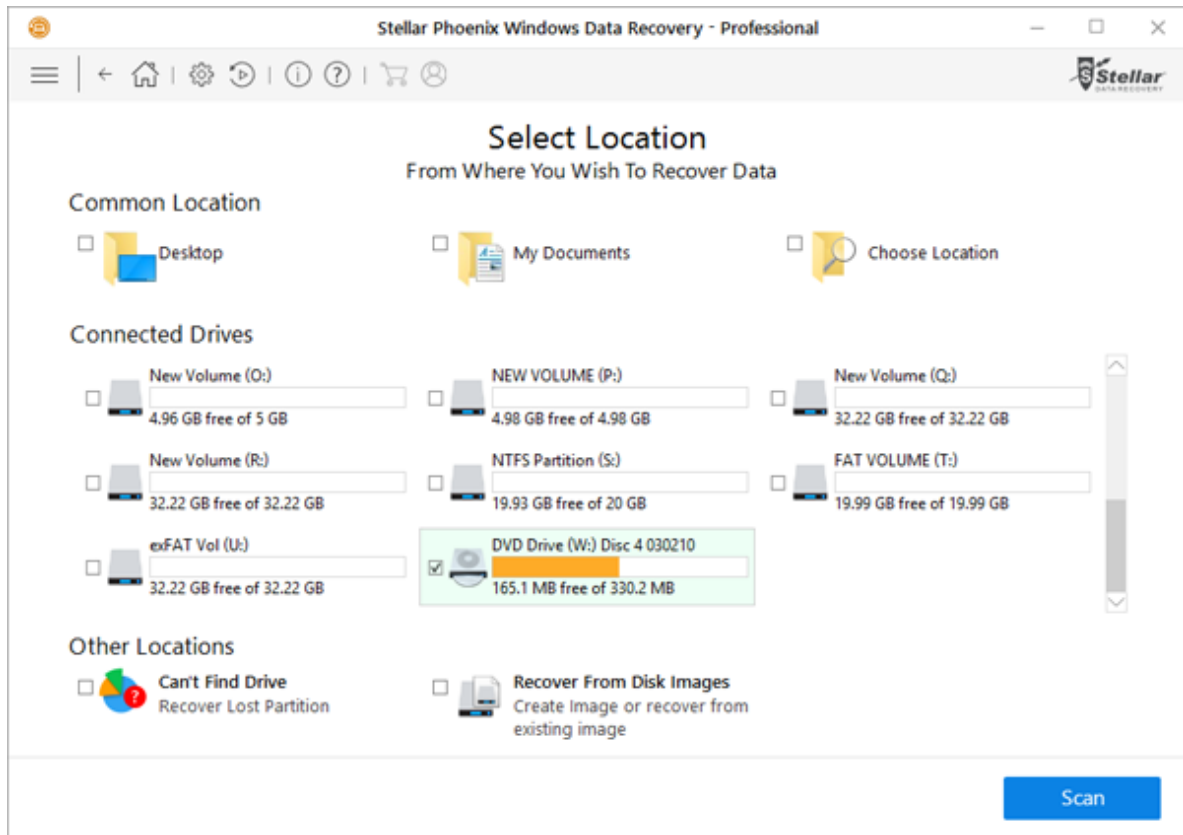
A CD/DVD disk might become unreadable or corrupt due to a number of factors, such as heat, dust, scratches on the disk. **Stellar Phoenix Windows Data Recovery** software can recover data from damaged CD-ROM, CD-RW, DVD and DVD-RW discs. **Stellar Phoenix Windows Data Recovery** application supports recovery from corrupt optical media disks burnt on Windows, Linux, UNIX, and Macintosh systems. The application performs a scan on the selected optical media for recovery.

## To scan CD/DVD:

1. Run **Stellar Phoenix Windows Data Recovery**.
2. From **Select What to Recover** screen, select the type of data i.e. **Everything**, **Documents**, **Folders & Emails** or **Multimedia Files**, you want to recover.



3. Click **Next**.
4. From **Select Location** screen, select the connected CD/DVD drive from **Connected Drives**. Click **Scan**. Click **Stop** to stop the scan at any point.



**Note:** You can select only one CD/DVD at a time for recovery.


# Save Scan Information


You can save scan result of any scanning process as DAT file. You can save scan result of a complete or incomplete recovery process.

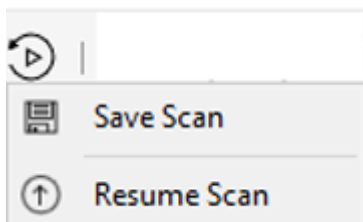
Saving scan information saves your time. You can resume recovery by selecting the DAT file without scanning the drive again.

**To save scan information we have two options:**

## Menu bar

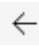
After Scanning, you can save it using Resume Recovery button  which enables us to save scan information .

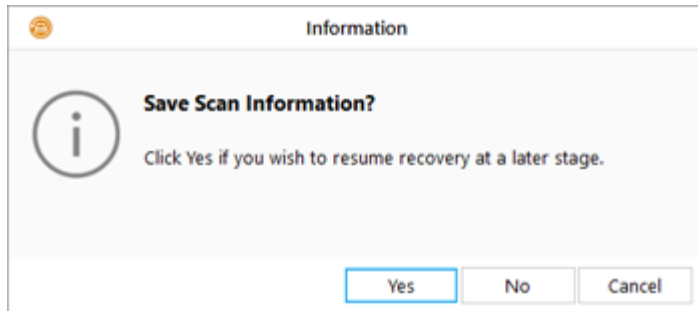
1. Click on  button in menu bar.
2. Two options will be displayed
  - **Save Scan**- enables you to save the scan information at your desired location. You need to enter the location and name for the file and click on save.



- **Resume Scan**- This option allows you to resume a scan from a previously saved scan information.

## Back Button:

1. In '**Scan Results**' window. Click **Back**  button or close the application.
2. You will be prompted to save scan information.



3. Click **Yes**.
4. In '**Save scan information**' dialog box, browse to the location where image file should be saved. Type the name of the image file in the **File name** text box. Click **Save**.

Scan Information file will be saved with DAT extension.

**Note:** *If you stopped a scanning process, you can save scan information up to that point. However, you should perform complete scan, and then save scan result.*



**Tip:** *It is recommended that you should save 'scan information file' and 'hard disk image' at different locations with proper name such that you can easily retrieve the required DAT file.*

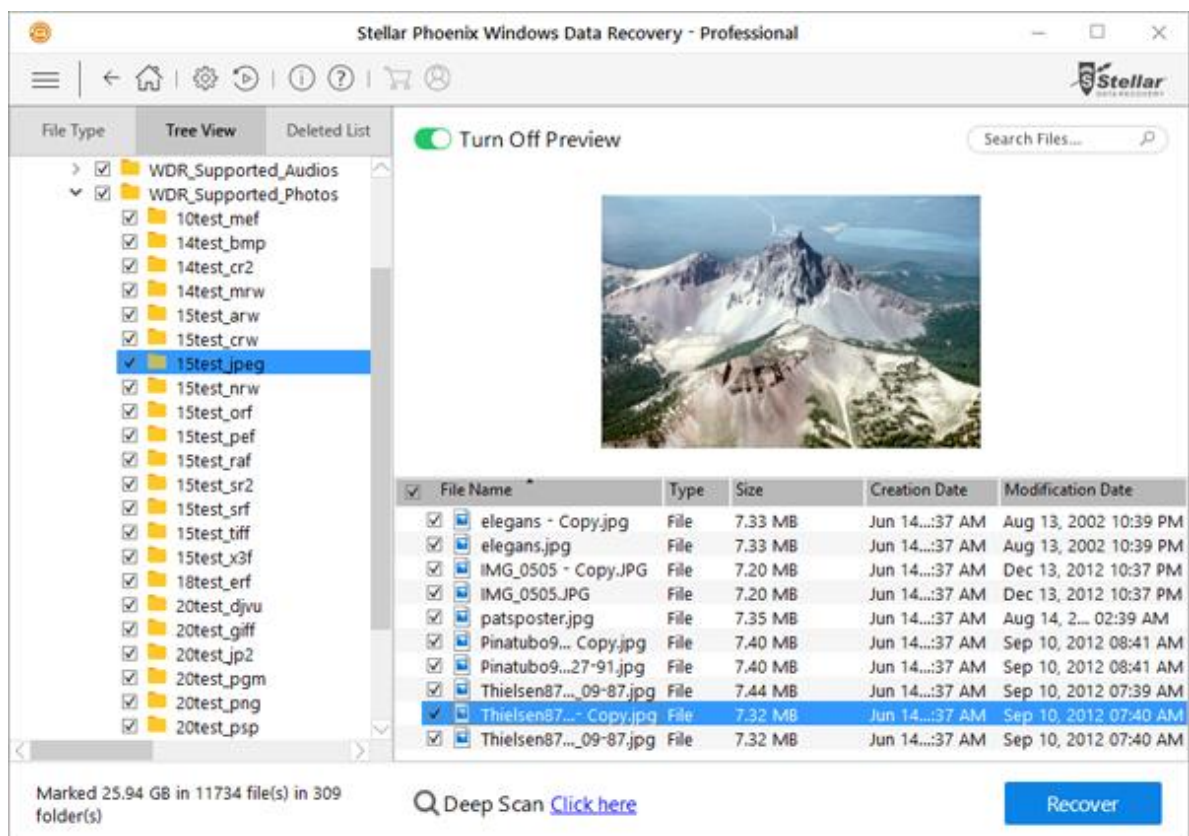
# Preview Scan Result

**Stellar Phoenix Windows Data Recovery** shows the preview of the files and folders present in the scanned physical volume or the removable media. All files and folders that are found in the scanned volume or removable media are shown in a three pane structure. The three panes are the left, top-right, and the bottom-right pane.

- In the left-pane, a tree structure according to folders is created.
- Top right-pane shows preview of file that are supported by the software.
- In bottom-right pane, all files and folders that are in the selected folder in the tree view are listed.

To preview a file:

1. After the scanning process is completed, all the files are listed in a **Preview** window as shown below:



2. Click a tab in the left pane.

- **File Type:** In this view, files/folders are listed according to their type such as Document, Audio, Video, Archive, etc.
  - **Tree View:** In this view, folders are listed in a hierarchical arrangement.
  - **Deleted List:** All the files and folders deleted from the drive are listed in this view.
3. Click a folder in the left pane to list files of that folder in the bottom right pane.
  4. Double-click the folder to move deeper into the folder.
  5. Click a file in the bottom-right pane to preview the file. Only supported files can be previewed.

**Note:** *If you can't find your desired file/folder in the list of scanned and detected files, you can choose **Deep Scan** option to perform a comprehensive scan of the selected drive or location.*



# Recover Files

**Stellar Phoenix Windows Data Recovery** can recover all files of supported file formats. You can save files and folders listed under the preview section at a location of your choice.

## To recover lost files:

1. From the **Preview** window, select the files and folders you want to recover. You can narrow the search result by selecting only specific files or type of files to view or recover from the **File Type** tab or to recover deleted files select the files from the **Deleted List**.

- **To search for specific files**

- Enter the name of the file in **Search Files** field  and hit **Enter**. To move to the next found entry click  or press **CTRL + g**

- **To save all files**

- Check the root node in the left pane and then click **Recover** or from the file list pane select the check box besides the **File Name** tab and then click **Recover**.

- **To save individual files(s)**

- Click a folder in the left pane to view files stored in it.
- Check the file(s) in the bottom right pane and then click **Recover**.

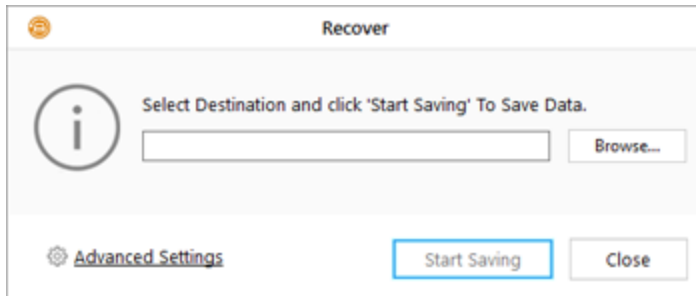
- **To recover individual file**

- Right-Click the file in the file-list and select **Recover** option.

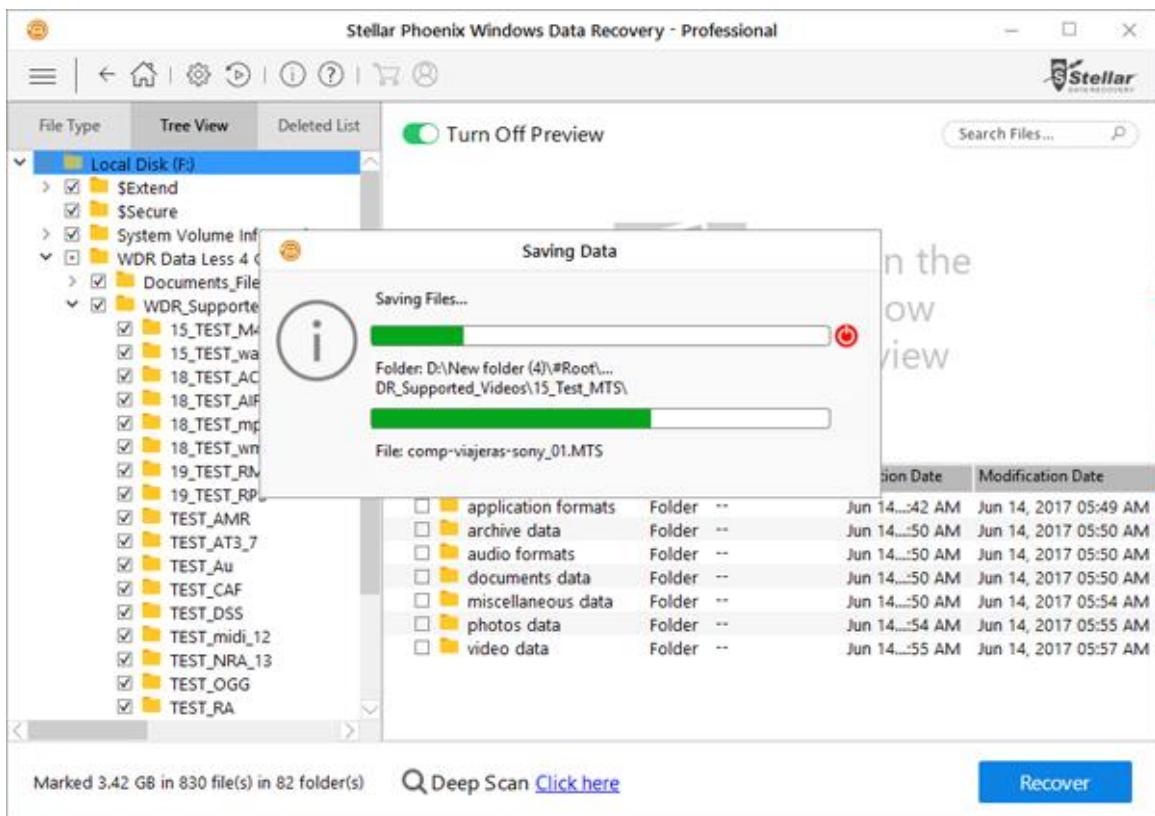
## To recover files of specific category:

- Click **File Type List** tab. Check the **File Types** category folders as per your choice. The files of the selected '**file types folders**' will be listed in the file list pane. You can select the individual files in the list.
- Click **Recover**.

2. A **Recover** dialog box is displayed. Click **Browse** to select a destination to save data or click on **Advanced Settings** to configure advance recovery options. Specify the destination and choose the options as per requirement.



3. Click **Start Saving** to start saving process. If the destination files have same names then you can overwrite, rename or skip. Choose as per the case.



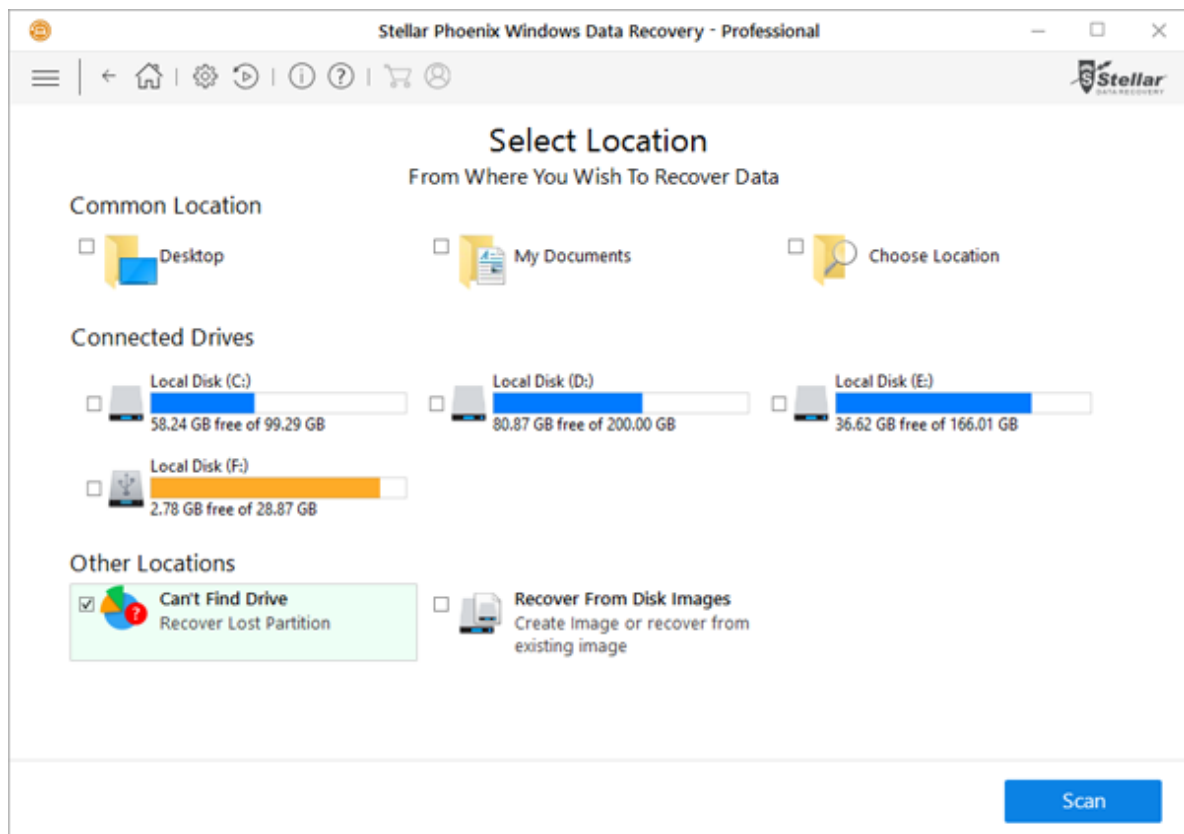
The selected files will be recovered and saved at the specified location. Navigate to the destination to view files.

# Recover Lost Partition

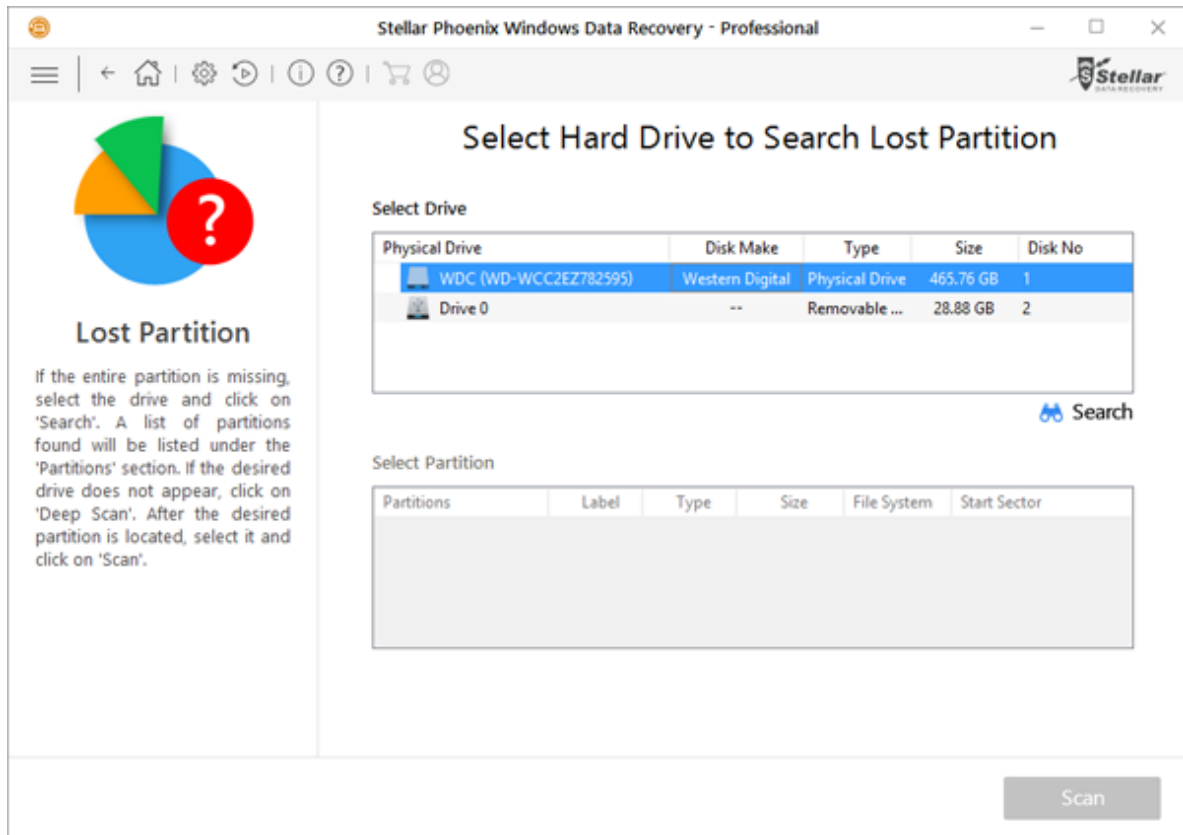
**Stellar Phoenix Windows Data Recovery** software allows you to search and recover data from lost and deleted partitions of a hard disk. You should use this option to recover data from an accidentally deleted partition. This option will search and list all the deleted and lost partitions in the hard disk along with existing volumes.

To recover lost partition:

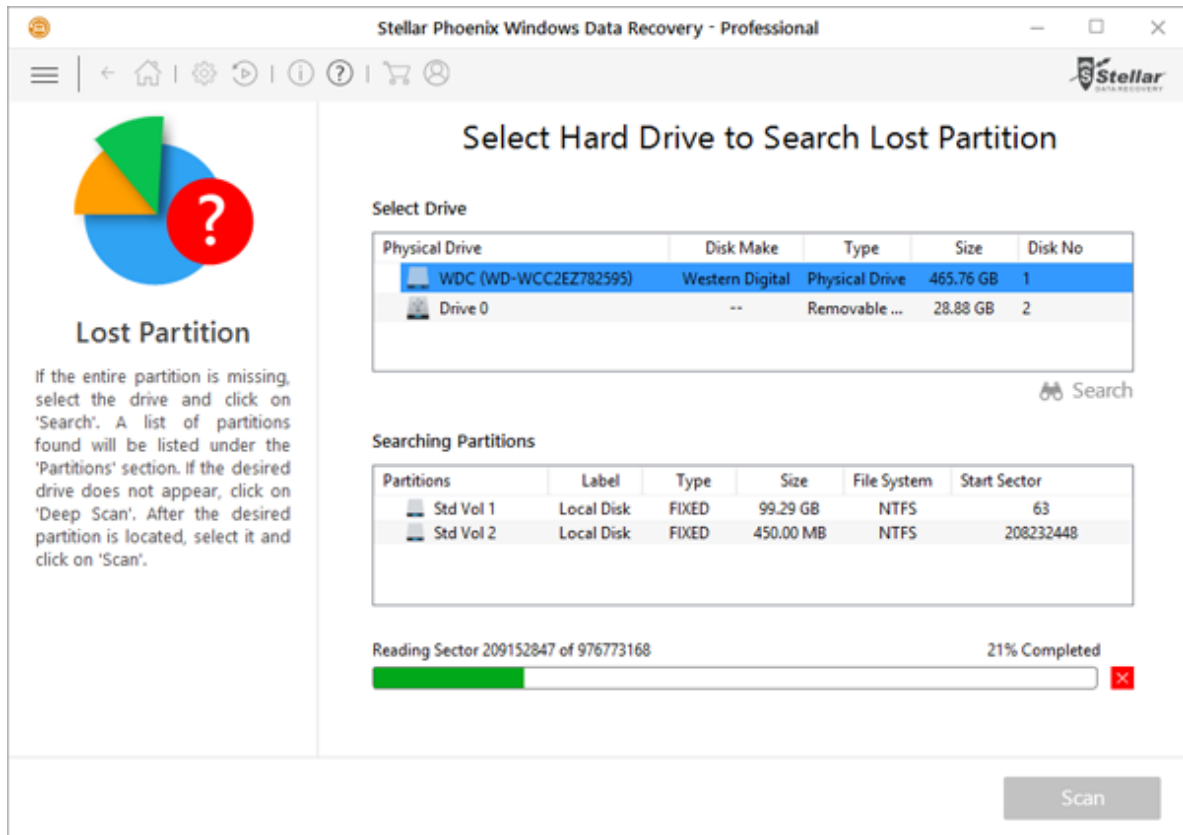
1. Run **Stellar Phoenix Windows Data Recovery**.
2. From **Select What to Recover** screen, select the type of data i.e. **Everything, Documents, Folders & Emails** or **Multimedia Files**, you want to recover.
3. Click **Next**.
4. On **Select Location** screen, select **Can't Find Drive** from **Other Locations**.



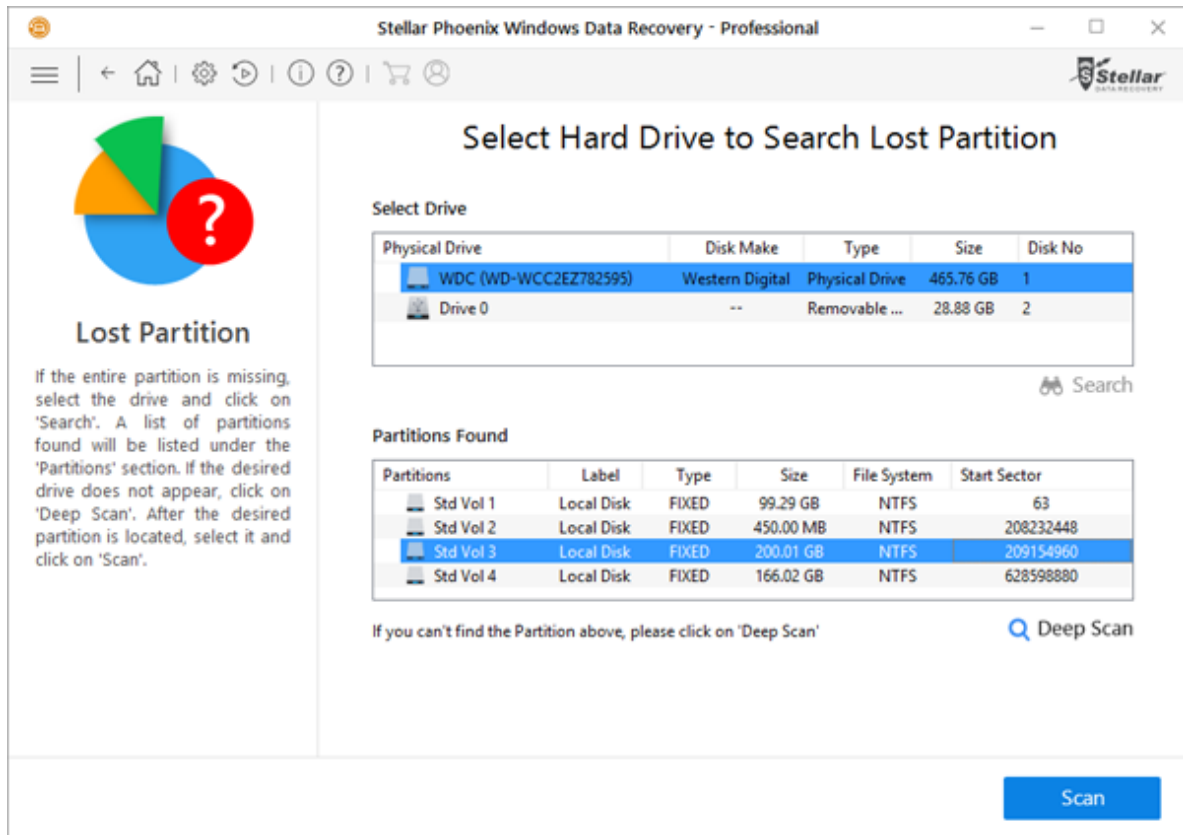
5. Click **Scan**. The following screen is displayed:



6. In the **Select Drive** section all the hard drives connected to the system are listed with their details. From this section, choose a hard drive you want to scan for lost partitions and click **Search**. A scan for lost or deleted partitions will be performed in the selected disk or drive.



- Any 'lost partition' detected, will be listed in the **Partition Found** section as shown below:



- From the list of partitions found, select any desired partition and click **Scan** to continue with the recovery process.

**Note:** If you can't find your desired partition in the **Partition Found** section, you can choose **Deep Scan** option to perform a comprehensive scan of the selected drive for deleted or lost partition.

# Recover Data from Disk Images

Disk Image is a mirror image of any storage device from which you wish to recover data, such as "Internal or External Hard Disks", "Pen Drives", "Volumes", "Storage Cards" etc. When you create an image, scanning process is not performed; instead a copy of the selected source is saved as IMG file. You can start recovery either after completion of drive imaging or at later time by using '**Recovery from Disk Images**' option.

**Stellar Phoenix Windows Data Recovery** allows you to recover data from any previously created disk images or create a disk image of any drive, partition or volume and perform the recovery process on the newly created image. Additionally, you can also perform the recovery process on any previously saved scan information.

- Create Image
- Recover from Existing Image or Scan Information

# Create Image

You can create an image of different storage devices and save them as IMG file by using the **Create Image** option of **Stellar Phoenix Windows Data Recovery**. The storage devices whose image you can create are:

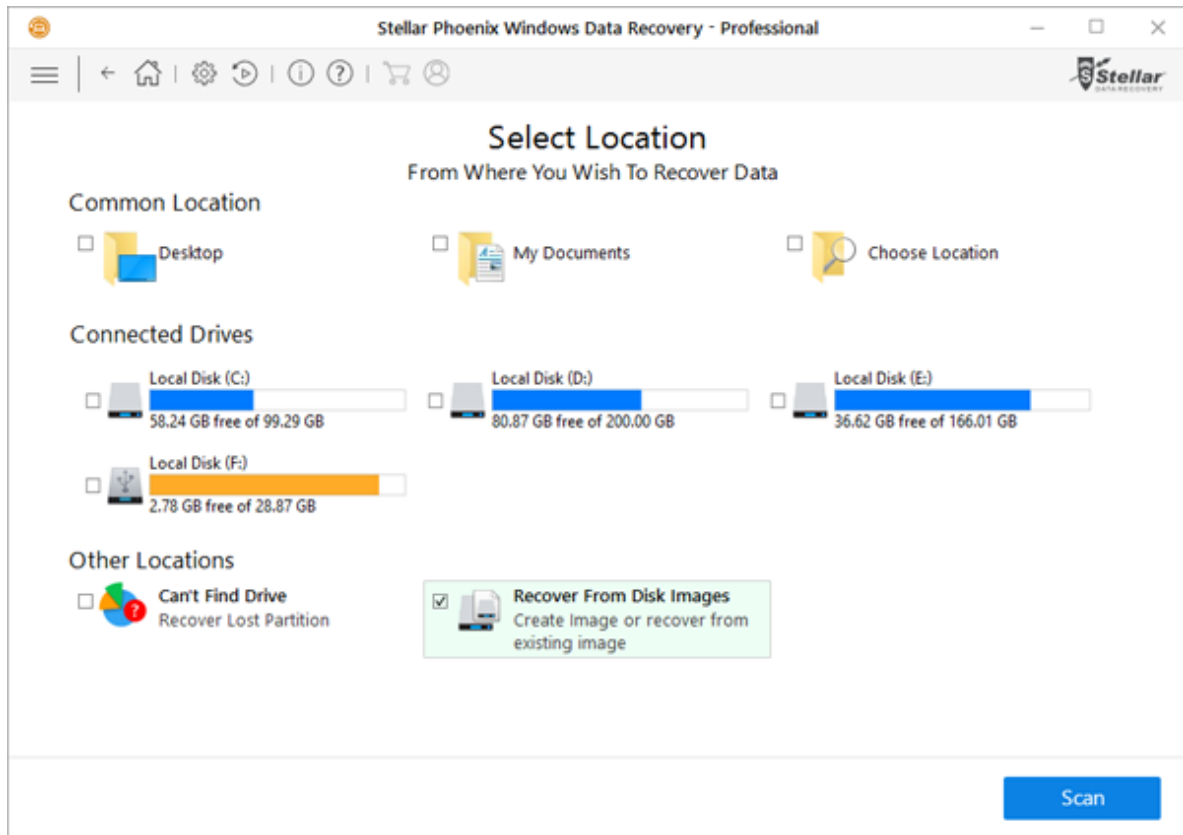
- Hard Disks
- Existing logical volumes in hard disks
- Removable media such as pen drives, external hard disks etc.

Images, of all sources listed earlier, are saved as IMG file. This IMG file is of same size as of the source. You can use the image files to resume recovery later.

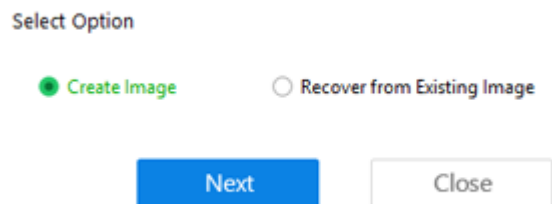
The image you create by using **Stellar Phoenix Windows Data Recovery** will be of same size as the selected hard disk, pen drive, or volume. Ensure that the location where image file needs to be saved has sufficient space to store the image file.

## To create image file of hard disk, volume, or removable media:

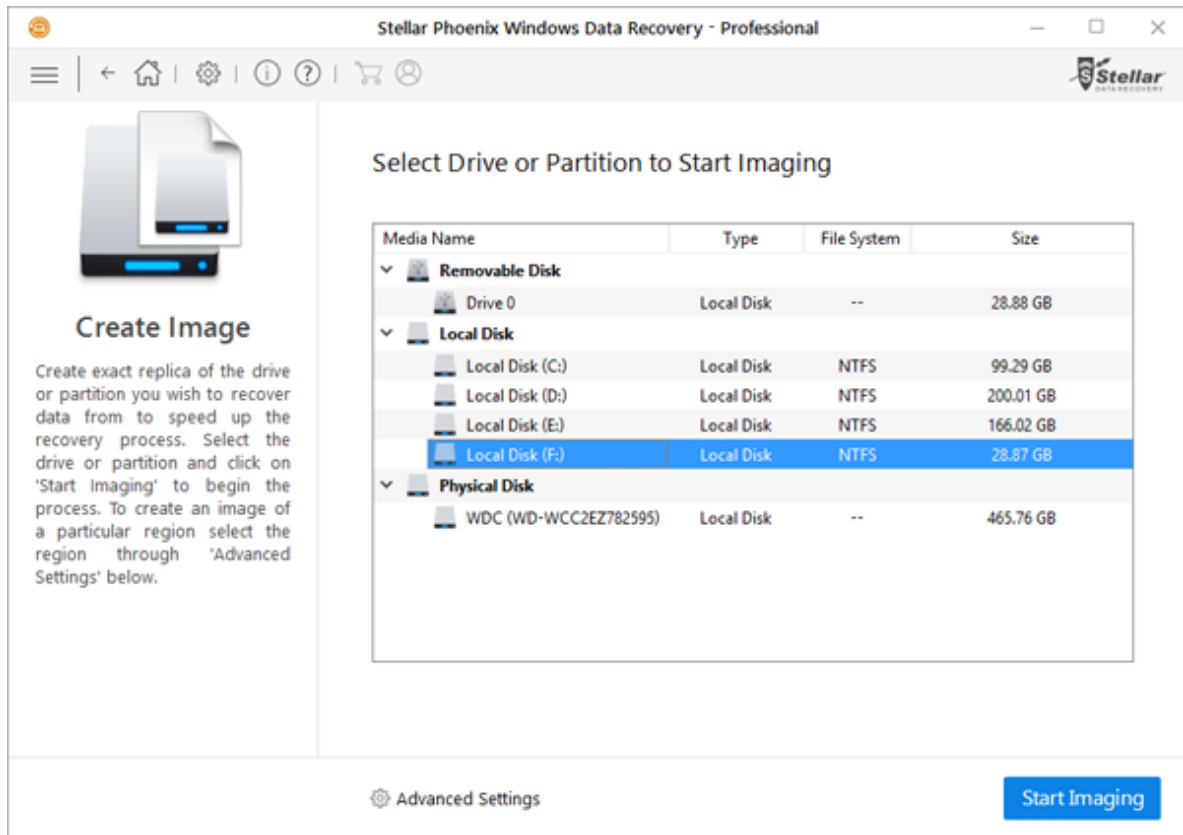
1. Run **Stellar Phoenix Windows Data Recovery** software.
2. From **Select What to Recover** screen, select the type of data i.e. **Everything**, **Documents**, **Folders & Emails** or **Multimedia Files**, you want to recover. Click **Next**.
3. On **Select Location** screen, select **Recover from Disk Images** from **Other Locations** and click **Scan**.



- From the displayed dialog box select **Create Image** option and click **Next**.



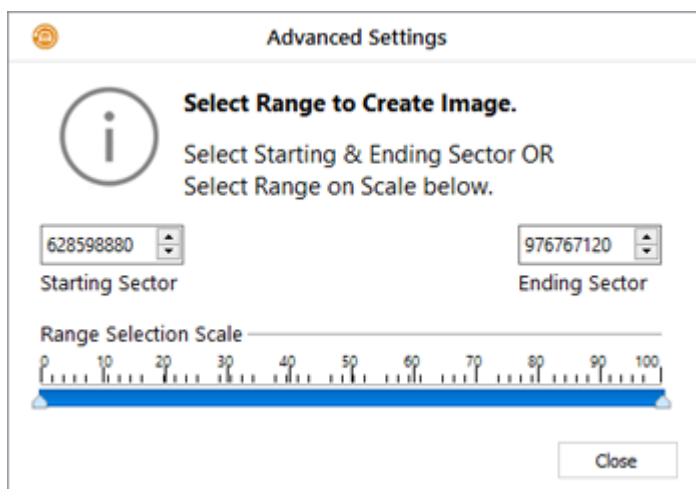
- From **Create Image** screen, select the drive or partition for which you wish to create an image.



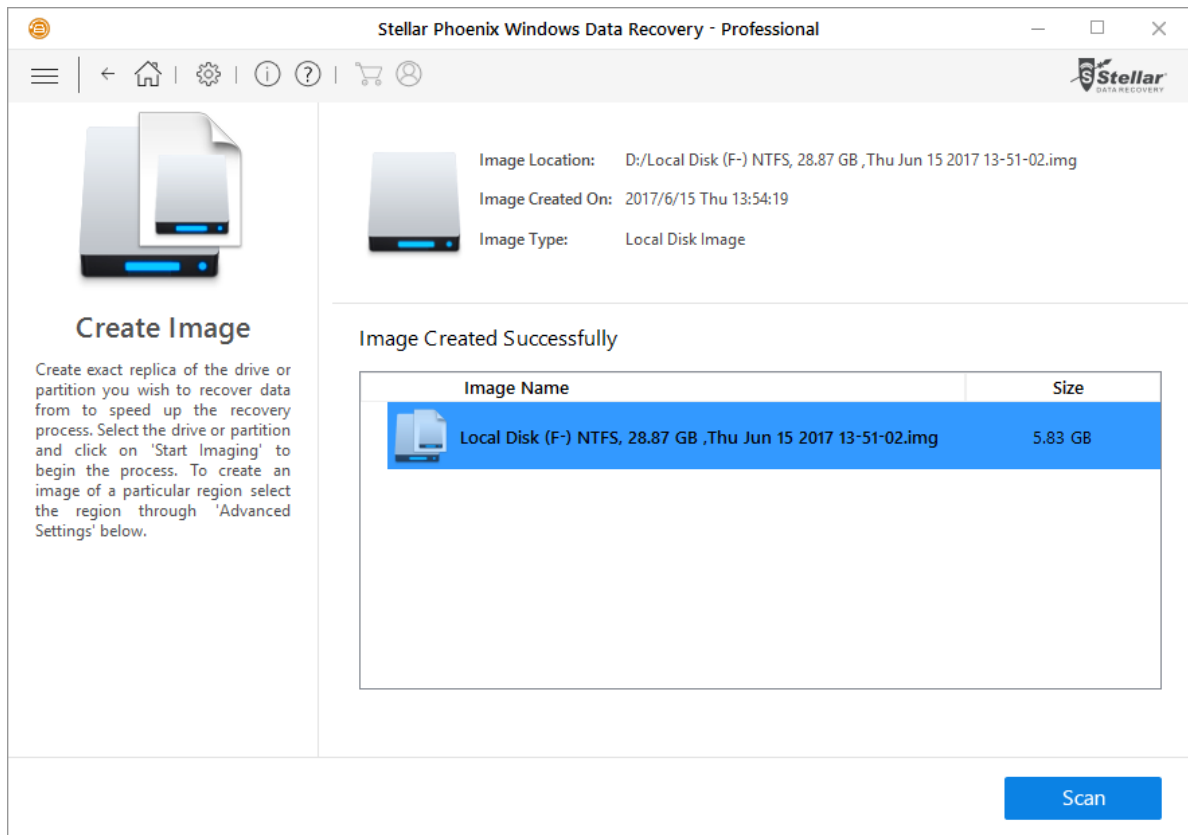
6. To create image of the entire drive or partition click **Start Imaging**

Or,

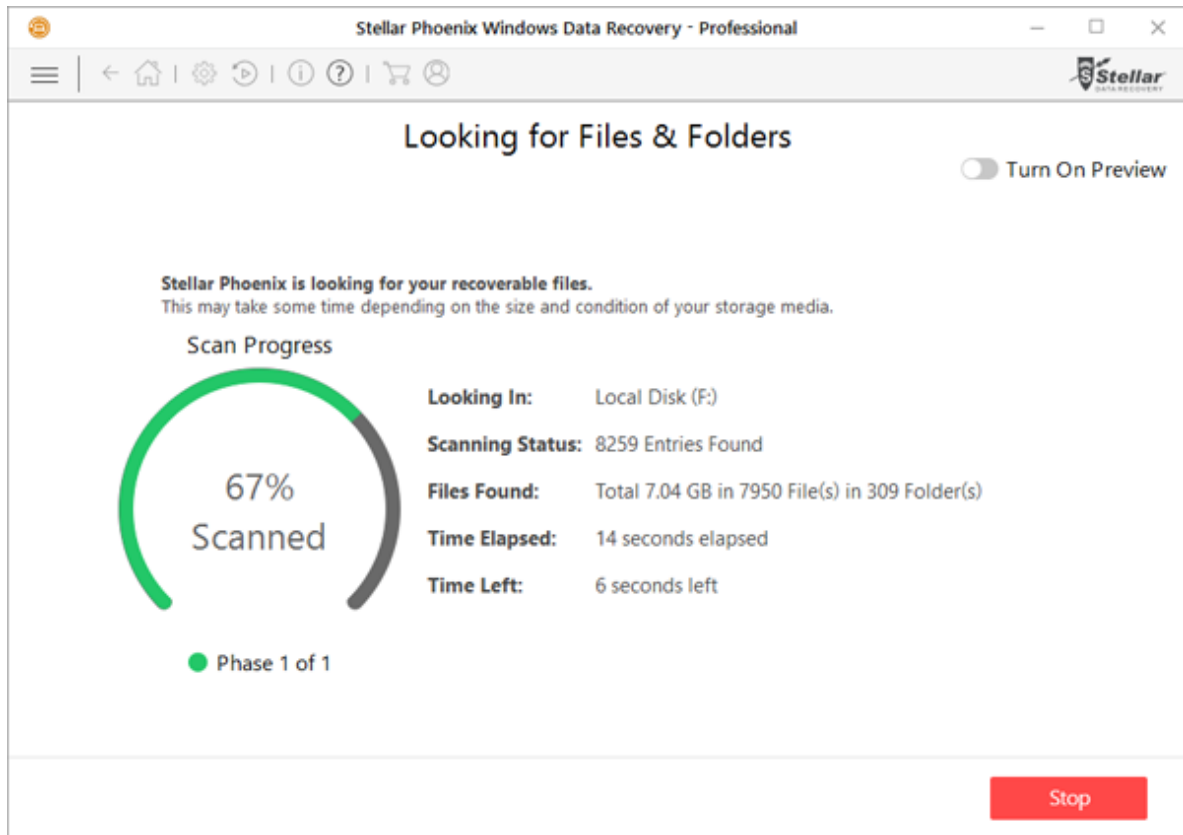
To create image of selected region click on **Advanced Settings**. From '**Select Range to Create Image**' screen drag the sliders to define starting and ending sectors of the image file. Click **Close**, and then click **Start Imaging**.



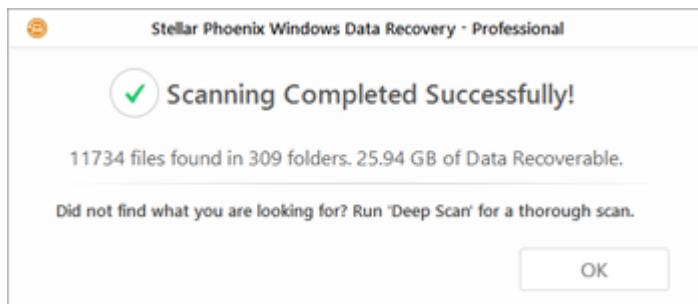
7. In '**Create Media Image to Save**' dialog box, locate the destination where image file should be saved. In the **File Name** text box, type name. Click **Save**.
8. After the process gets completed, a screen is displayed below which shows the newly created image.



9. Click **Scan** to start the recovery process.
10. A screen showing the scanning process is displayed. Click **Stop** to stop the scan at any point.



11. Once the scanning process is completed, details of the files and folder found are displayed in a dialog box as shown below:



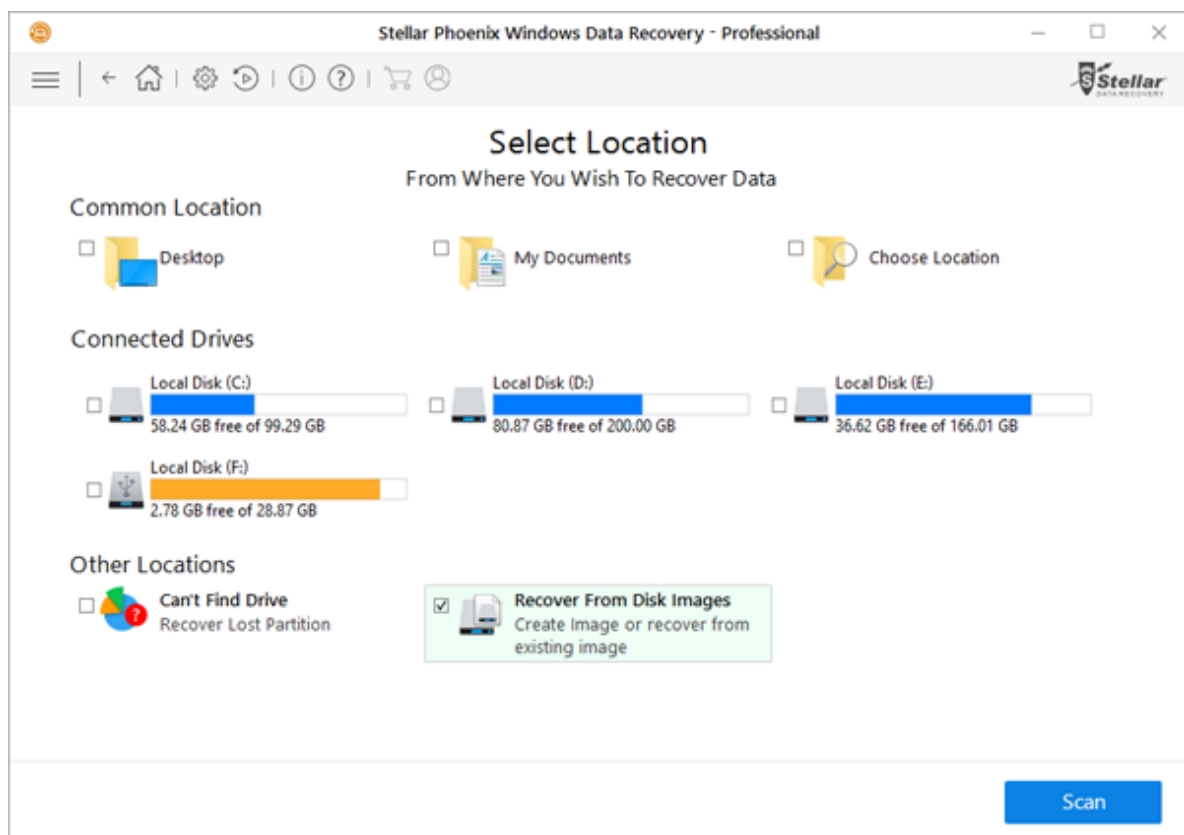
**Tip:** It is recommended that you should save 'scan information file' and 'hard disk image' at different locations with proper name such that you can easily retrieve the required image file.

# Recover from Existing Image or Scan Information

With **Stellar Phoenix Windows Data Recovery** you can perform the recovery operation on a newly created disk image using Create Image option or on any previously created disk image.

**To recover data using any disk image:**

1. Run **Stellar Phoenix Windows Data Recovery** software.
2. From **Select What to Recover** screen, select the type of data i.e. **Everything**, **Documents**, **Folders & Emails** or **Multimedia Files**, you want to recover.
3. Click **Next**.
4. On **Select Location** screen, select **Recover from Disk Images** from **Other Locations** and click **Scan**.



5. From the displayed dialog box select **Recover from Existing Image** option and click **Next**.

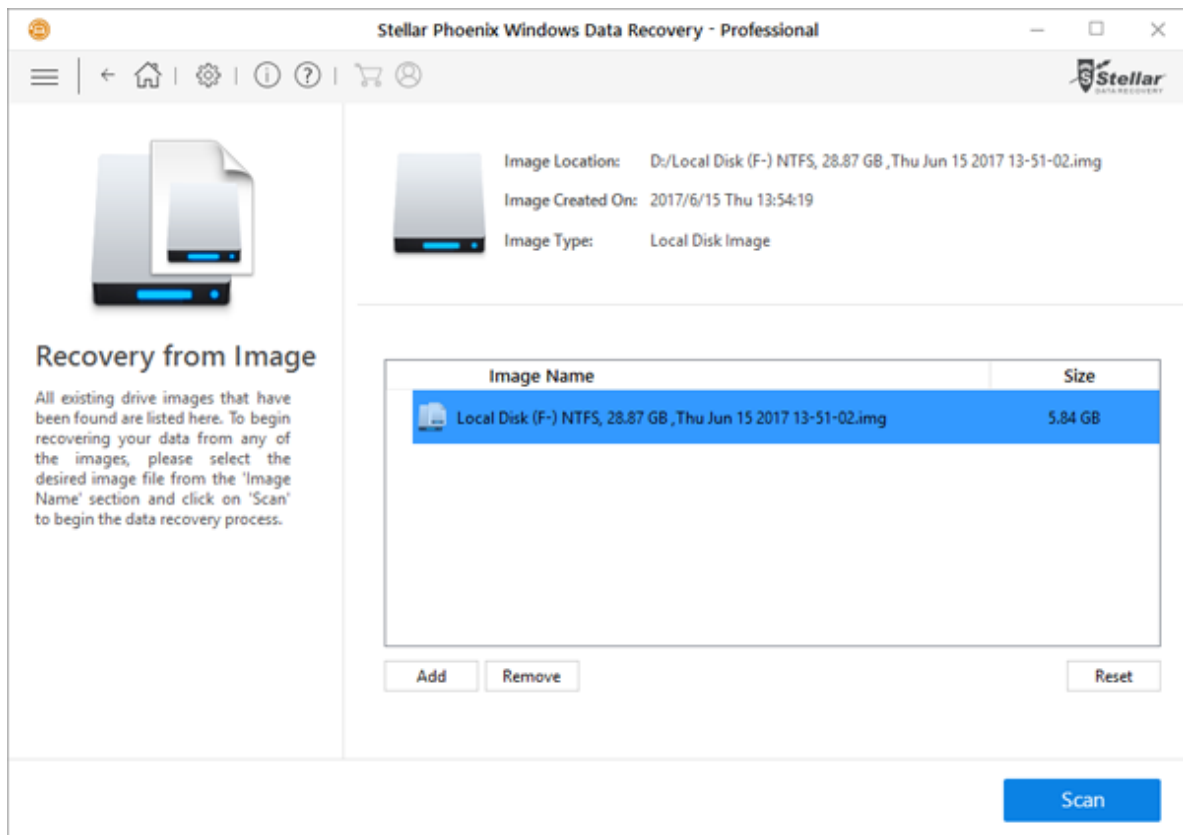
### Select Option

☐ Create Image ☒ Recover from Existing Image

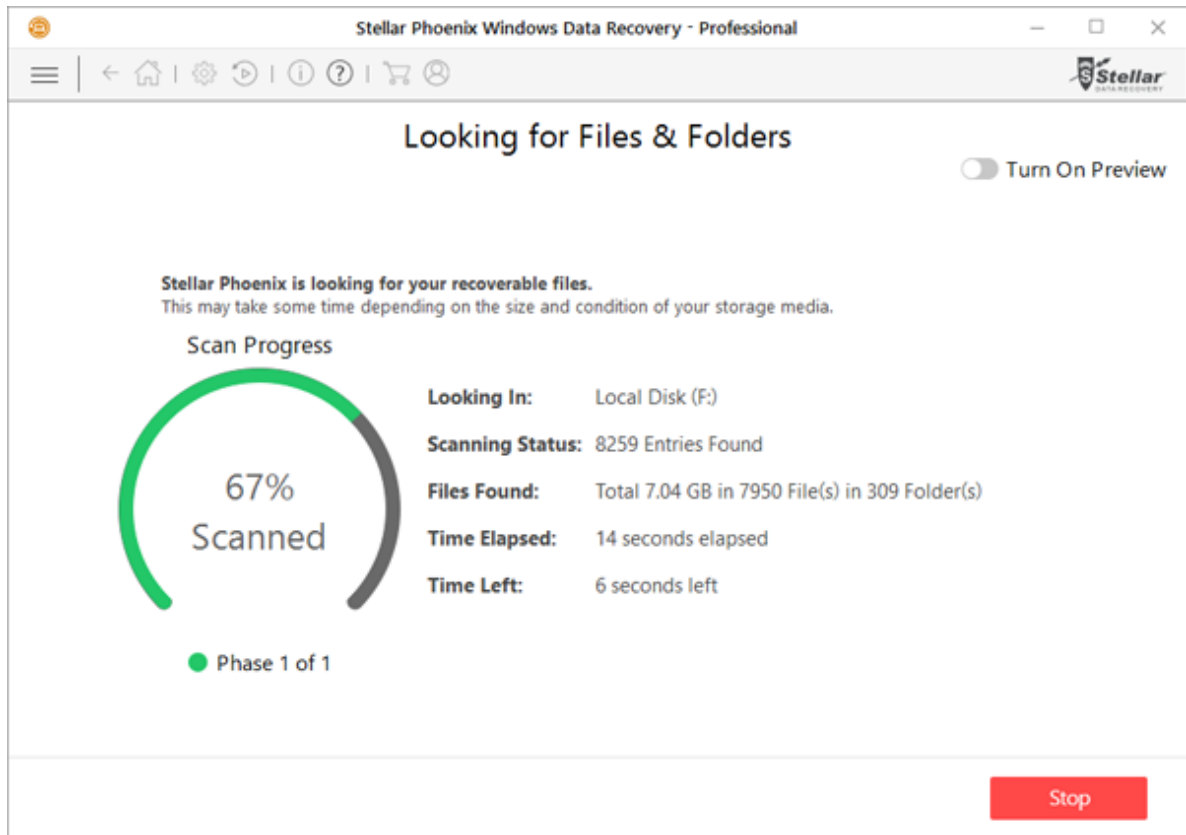
Next

Close

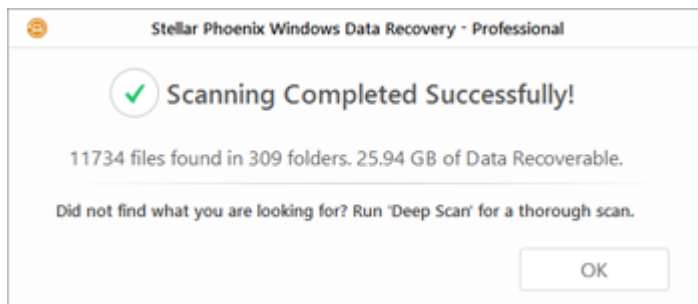
6. All the disk images and saved scan information are listed on **Recovery from Image** screen with their respective size. Select the image from which you wish recover data and click **Add**. Alternatively, to remove any image select that image and click **Remove**. To remove all the images, click **Reset**.



7. After adding the images click **Scan** to start the recovery process.
8. A screen showing the scanning process is displayed. Click **Stop** to stop the scan at any point.



9. Once the scanning process is completed, details of the files and folder found are displayed in a dialog box as shown below:



**Note:** You can select only one volume at a time for recovery.

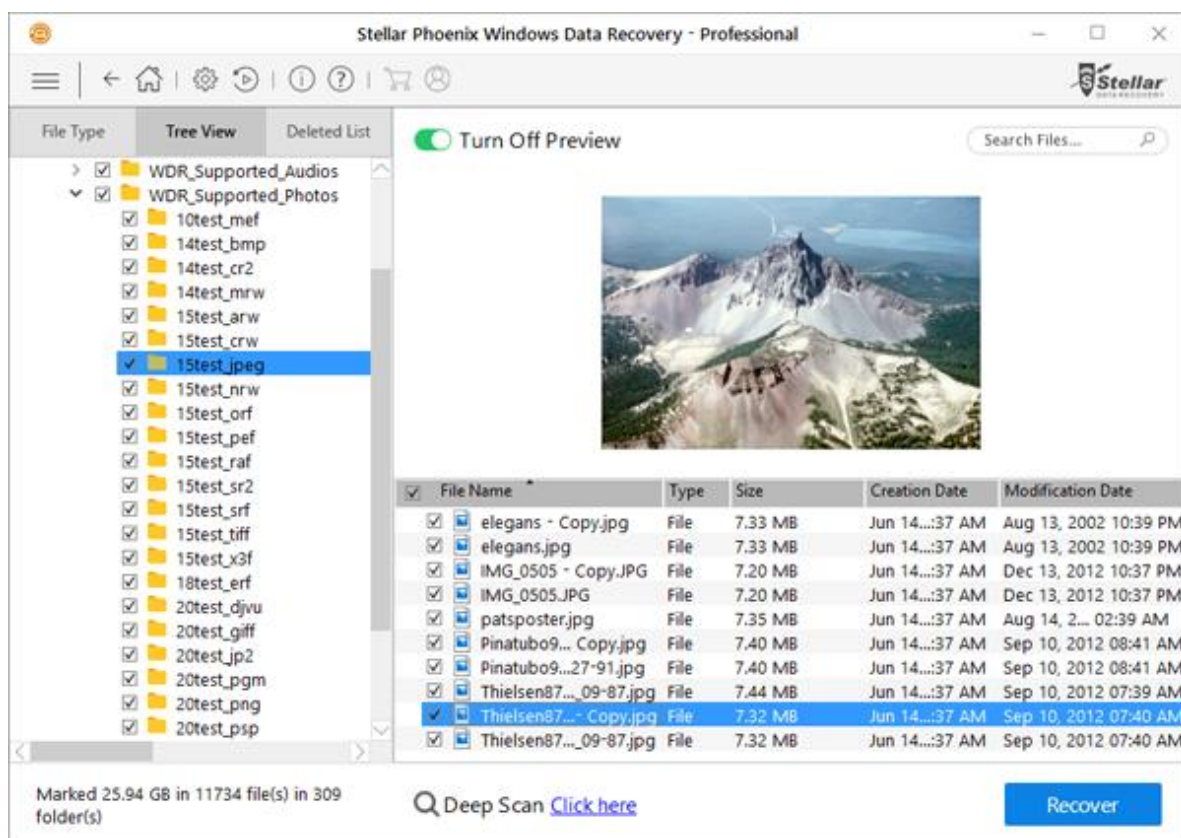
# Deep Scan

**Deep Scan** allows you to recover data from hard disk, pen drive or volumes of a hard disk. It does a comprehensive scan of the volume to recover each and every bit of lost or deleted data. It searches for lost files on the basis of file signature. This recovery option recovers everything that is found in the selected source. This option is especially helpful in case of severely corrupted volume.

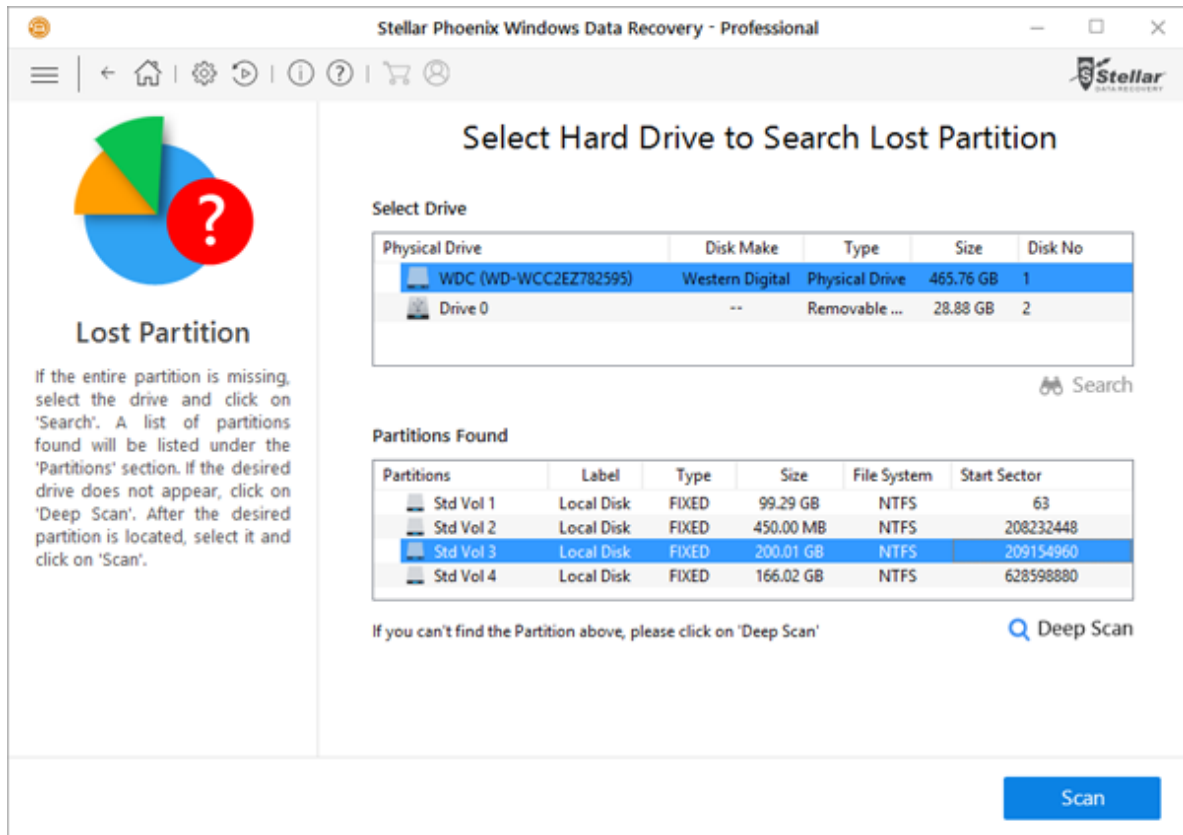
In case, after the quick scan process is completed and your desired file is not included in the list of files detected, you can opt for **Deep Scan** to perform a comprehensive scan of the selected drive or location.

## To perform Deep Scan:

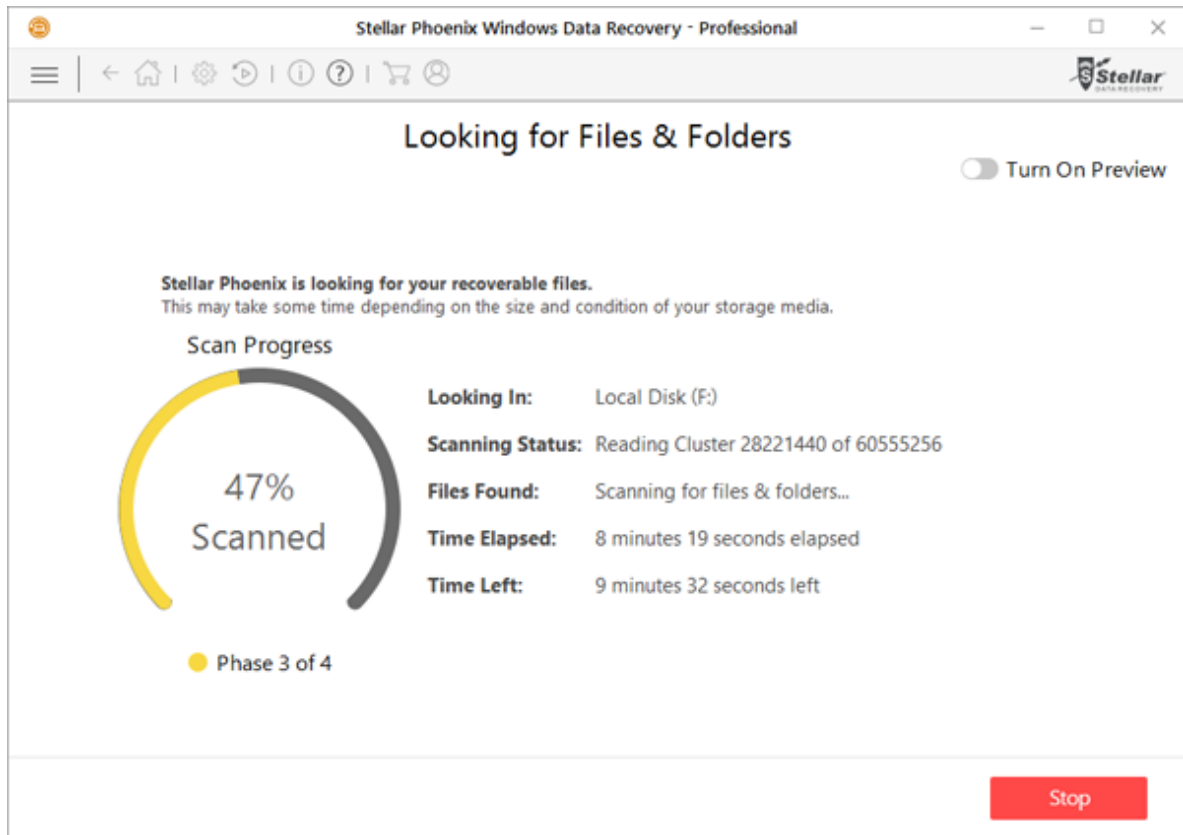
- Once quick scan is completed, in the preview window choose **Click Here** option given at the bottom of the window to start **Deep Scan**.



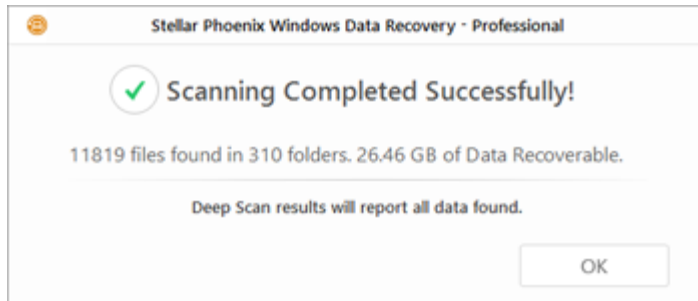
- In case you can't find your desired partition in the **Partition Found** section, you can choose **Deep Scan** option to perform a comprehensive scan of the selected drive for deleted or lost partition.



- A screen showing the scanning process is displayed. Click **Stop** to stop the scan at any point.



- Once the scanning process is completed, a dialog box showing the number of files and folders found during **Deep Scan** is displayed.











- Files found during **Deep Scan** can be viewed in the preview window and saved at any desired location.

# Configure Advanced Settings

**Advanced Settings** can be configured to run **Stellar Phoenix Windows Data Recovery** according to personal requirement. This option make this software exceptional and easy to operate.

To set advanced settings:


1. Run **Stellar Phoenix Windows Data Recovery**.
2. Click **Advanced Settings** button. Using this you can configure following settings:

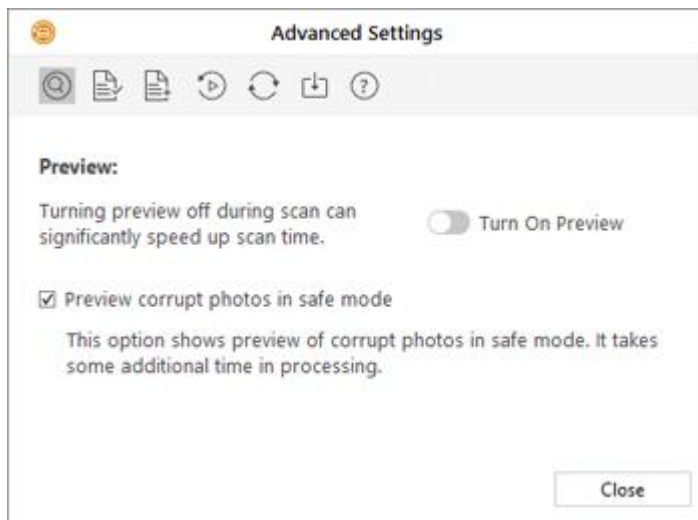
- To set preference for preview window, click Preview  button
- To select file types for recovery, click File list  button
- To set preferences for header, click Add Header  button
- To resume a recovery process, click Resume Recovery  button
- To check for updates, click Updates  button
- To import license to another computer, click Import License  button
- To export license to another computer, click Export License  button
- To access help manual for this software, click Help  button

# Preview

**Preview** option allows you to apply settings for preview window of the application.

To apply preview settings:

1. Run **Stellar Phoenix Windows Data Recovery**.
2. Click **Advanced Settings** button.
3. Click **Preview**  button from **Advanced Settings** window.




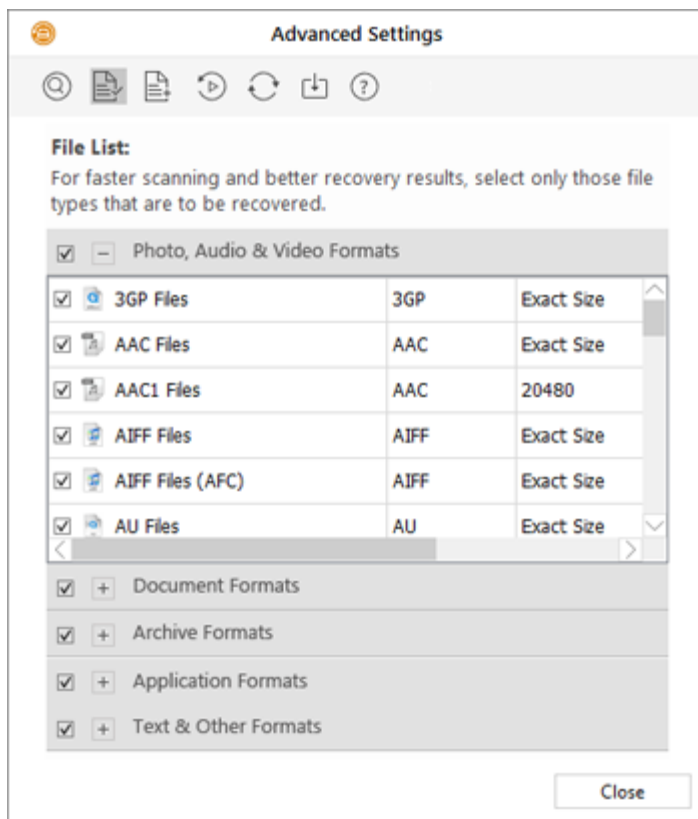
4. From the options displayed, select required settings.

# Selecting File Format

File types give information about the type of file such as video, audio and its extension. You can select file types while performing signature search such that, scanning process should search only for the specified file types. Various file types are listed in the file list option of **Stellar Phoenix Windows Data Recovery**. You can select the required file types for their recovery.

## To select file type:

1. Run **Stellar Phoenix Windows Data Recovery** software.
2. Click **Advanced Settings** button.
3. Click **File List**  button from **Advanced Settings** window.



4. A list of all supported file formats is shown. Select the file types you want to recover.

# Header Preferences

**Stellar Phoenix Windows Data Recovery** allows you to add additional file types apart from those already mentioned in **File Lists**. Using **Add Header** option you can add a new file type or edit an existing file type to facilitate the recovery process.

Add Header include following options:

- To add new file types manually or automatically, click **Add Header** button.
- To edit size of existing file types, click **Edit Header** button.


## Add Header

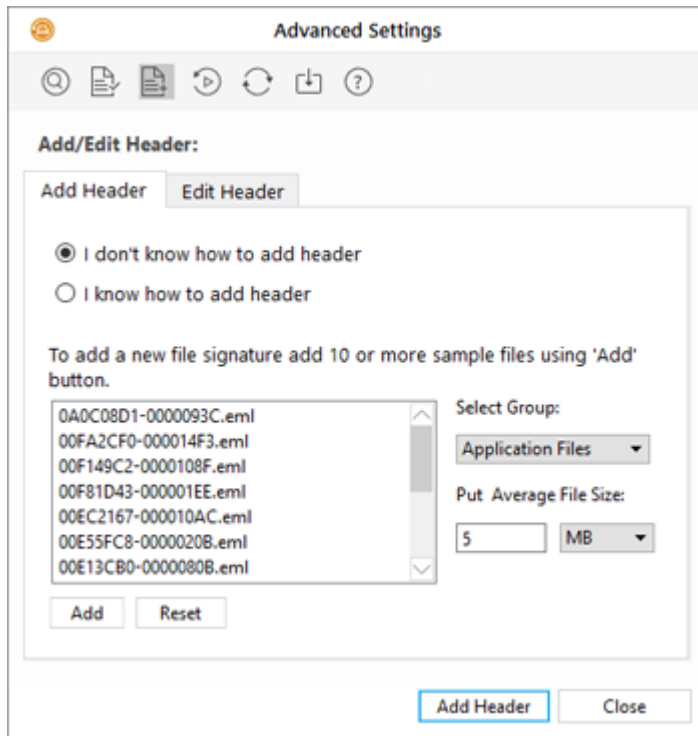
You can add new file types to the predefined list of supported file types in **Stellar Phoenix Windows Data Recovery** using **Add Header** functionality in **Advanced Settings** window.

You can add header either

- Automatically
- Manually


### To add header automatically:

1. Run **Stellar Phoenix Windows Data Recovery**.
2. Click **Advanced Settings** button.
3. Click **Add Header**  button from **Advanced Settings** window.
4. Select 'I don't know how to add header'.



5. Click **Add** button to browse to the location of file type you want to add.
6. You need to add at least 10 or more sample files of the same type to include it in the list of supported file types.
7. Name of the added file type will be listed in the left hand side box.
8. Type in header file name in the dialog box and then select the header file type from **Select Group** drop down list and the size from **Put Average File Size** text box.
9. Click **Add Header** button.

#### To add header manually:

1. Run **Stellar Phoenix Windows Data Recovery**.
2. Click **Advanced Settings** button.
3. Click **Add Header**  button from **Advanced Settings** window.
4. Select '**I know how to add header**'.

**Advanced Settings**

**Add/Edit Header:**

**Add Header** **Edit Header**

☐ I don't know how to add header

☒ I know how to add header

Specify signature by entering header (maximum of 8 bytes - Ex: 01 ff 0c d1 f4 00 03 05) in hexadecimal format.

Also specify its corresponding offset (between 0 and 511) in decimal format.

Software Name: SPWDR

File Extension: PNG

Group: Application Files

Max File Size: 100 KB

Header (in hexadecimal): 12 aa c1 36

At offset (in decimal): 0

**Add Header** **Close**

5. Enter the following:

- Specify **Software Name**.
- Specify **File Extension**.
- Select **Group** from the drop down list.
- Specify **Max File Size** in KB and MB.
- Specify **Header** in hexadecimal.
- Specify **At Offset** in decimal.


6. Click **Add Header** button.

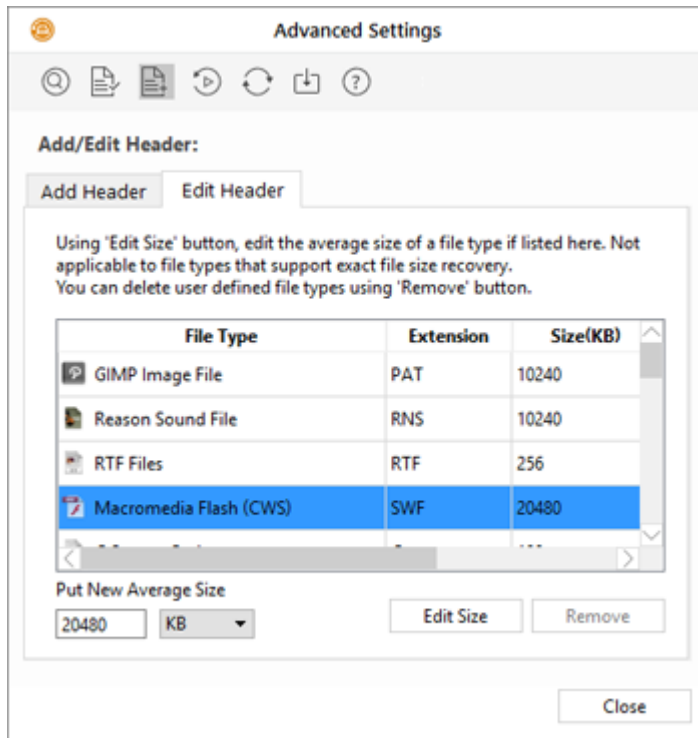
## Edit Header

You can also edit an existing file type or newly added file type. You can change every setting of the file type.

## To change size of supported file types/remove added file types:

1. Run **Stellar Phoenix Windows Data Recovery**.

2. Click **Advanced Settings** button.
3. Click **Add Header**  button from **Advanced Settings** window.
4. Click **Edit Header** button from **Advanced Settings** window.




5. Select the desired file type from the list and enter the new size of file type in **Put New Average Size** box.
6. Click **Edit Size** button to save the size for your file type.
7. Click **Remove** button in case you want to delete the selected file type from list.

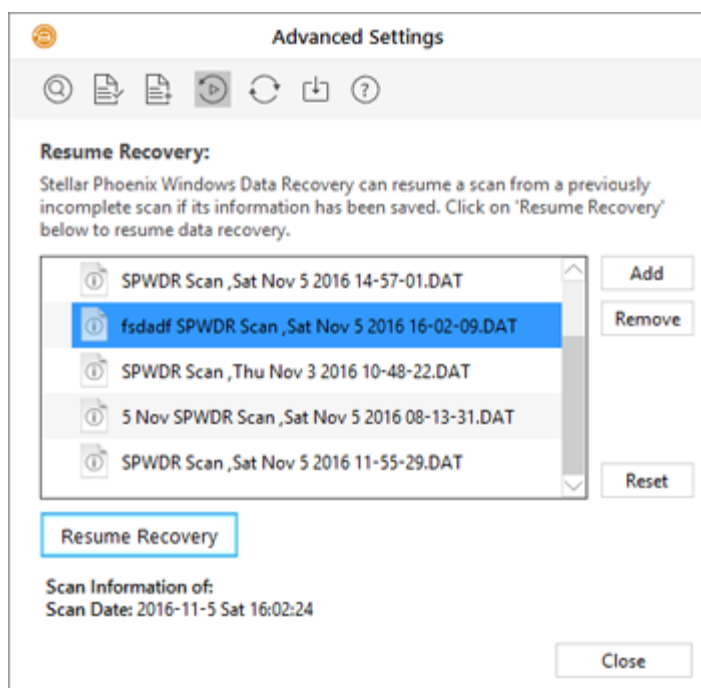
# Resume Recovery

Scan Information file contains information of a scan and is saved as a DAT file. You can save scan information file during any complete or incomplete recovery process. DAT file can be used to restart recovery later. For example, you saved DAT file of a scanning process and recovered only some files from that scan result. Later, you want to recover some more files from the same drive. You can use the saved DAT file to restart recovery.

Using a scan information file saves time, since scanning of each file does not take place. All files and folders shown after scan process will be shown on loading the DAT file created for that scan. In addition, if you have performed scanning process but not saved any files then you can use the DAT file to restart recovery at some other time.

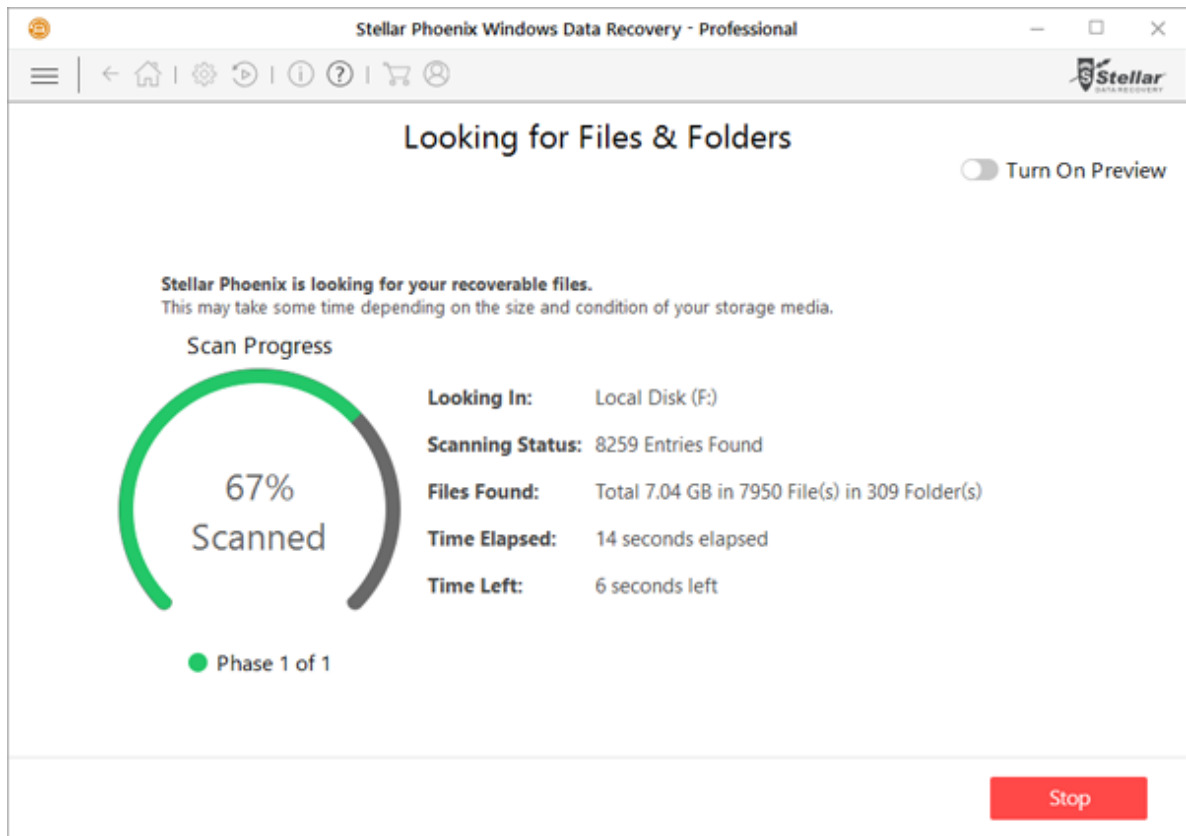
## To resume recovery by using scan information file:

1. Run **Stellar Phoenix Windows Data Recovery**.
2. Click **Advanced Settings** button.
3. Click **Resume Recovery**  button from **Advanced Settings** window.

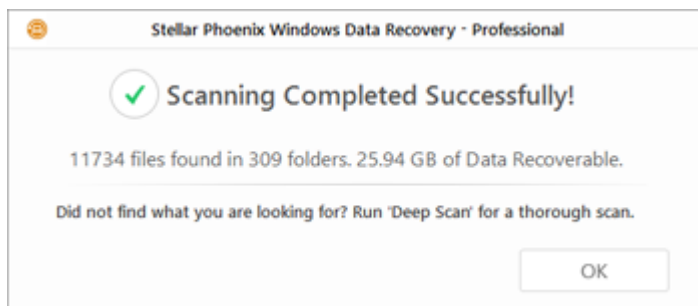


4. From the list of saved scan information select the image for which you want to resume the recovery process and click **Add**. Similarly, to remove any image from the recovery process, select the image and click **Remove**.

5. Click **Resume Recovery** to start recovery process.
6. A screen showing the scanning process is displayed. Click **Stop** to stop the scan at any point.



7. Once the scanning process is completed, details of the files and folder found are displayed in a dialog box as shown below:



# FAQs

## 1. Are only audio, video, documents and photos recovered by this software?

No, all the files and folders in the selected volume can be recovered.

## 2. Can I recover a specific file by help of this software?

Yes, you can right-click the file and select **Recover** button.

## 3. I have deleted a volume. Can I recover the files in it?

Yes, choose the Recover Lost Partition option in the application to find the lost or deleted volumes. Then continue with the scan option to recover data from the deleted volumes.

## 4. What is quick scan and deep scan?

Quick scan is a faster scanning option. If the files are not recovered still, then you can use deep scan. Deep scan is a bit slower but results are better than quick scan.

## 5. From where I can buy the product? Is there any demo option available?

You can buy the product from here. You can download the demo version from here. Demo version will show the preview of the files, but the save process will be done only after the demo version is registered.

## 6. How much time Stellar Phoenix Windows Data Recovery will take to recover data?

The recovery time depends upon the size of the hard disk or volume. If the process is running that means that software is still scanning the deleted files and you have to wait for recovery process to complete. Once the process is complete you can save the repaired file at any selected location.

## 7. Can I recover data from my ExFAT partition?

Yes, you can recover data from ExFAT partition. **Stellar Phoenix Windows Data Recovery** software supports NTFS, FAT, FAT16, FAT32 and ExFat file systems.

## 8. How to find only a particular file type and recover them?

You can search for a specific file in the preview window or from **File Type List** tab check the **File Types** category folders as per your choice. The files of the selected '**file types folders**' will be listed in the file list pane. Select the file(s) and click Recover. The files are saved at the selected destination.

## 9. How can I recover only deleted data?

To recover deleted data

- Scan the drive or volume from which you want to recover data.
- Once the scanning process is completed, all the scanned files can be viewed in the **Preview** window.
- From list of scanned files, select the files you want to recover and click **Recover**. Select destination to save recovered files and click **Start Saving** to start saving process.

## 10. What is create image, why do I need it?

Using the Create Image option of **Stellar Phoenix Windows Data Recovery** you can create an image of different storage devices and save them as IMG file. This IMG file can be used to resume the recovery process at a later stage.

## 11. Can the software recover only images from a removable storage device?

Yes, you can recover only photos from removable devices like pen drive, memory card etc. Select *Photos* option from **Select What to Recover** screen to search the files according to your criteria.

# Legal Notices

## Copyright

**Stellar Phoenix Windows Data Recovery** software, accompanied user manual and documentation are copyright of Stellar Information Technology Private Limited with all rights reserved. Under the copyright laws, this user manual cannot be reproduced in any form without the prior written permission of Stellar Information Technology Private Limited. No Patent Liability is assumed, however, with respect to the use of the information contained herein.

**Copyright © Stellar Information Technology Private Limited. All rights reserved.**

## Disclaimer

The Information contained in this manual, including but not limited to any product specifications, is subject to change without notice.

**STELLAR INFORMATION TECHNOLOGY PRIVATE LIMITED PROVIDES NO WARRANTY WITH REGARD TO THIS MANUAL OR ANY OTHER INFORMATION CONTAINED HEREIN AND HEREBY EXPRESSLY DISCLAIMS ANY IMPLIED WARRANTIES OF MERCHANTABILITY OR FITNESS FOR ANY PARTICULAR PURPOSE WITH REGARD TO ANY OF THE FOREGOING STELLAR INFORMATION TECHNOLOGY PRIVATE LIMITED ASSUMES NO LIABILITY FOR ANY DAMAGES INCURRED DIRECTLY OR INDIRECTLY FROM ANY TECHNICAL OR TYPOGRAPHICAL ERRORS OR OMISSIONS CONTAINED HEREIN OR FOR DISCREPANCIES BETWEEN THE PRODUCT AND THE MANUAL. IN NO EVENT SHALL STELLAR INFORMATION TECHNOLOGY PRIVATE LIMITED, BE LIABLE FOR ANY INCIDENTAL, CONSEQUENTIAL SPECIAL, OR EXEMPLARY DAMAGES, WHETHER BASED ON TORT, CONTRACT OR OTHERWISE, ARISING OUT OF OR IN CONNECTION WITH THIS MANUAL OR ANY OTHER INFORMATION CONTAINED HEREIN OR THE USE THEREOF.**

## Trademarks

**Stellar Phoenix Windows Data Recovery®** is a registered trademark of Stellar Information Technology Private Limited.

Windows Server 2008, Windows Server 2012, Windows 7®, Windows 8®, Windows 8.1®, Windows 10® are registered trademarks of Microsoft® Corporation Inc.

All Trademarks Acknowledged.

All other brands and product names are trademarks or registered trademarks of their respective companies.

## License Agreement - Stellar Phoenix Windows Data Recovery

Stellar Phoenix Windows Data Recovery

Copyright © Stellar Information Technology Private Limited. INDIA

[www.stellarinfo.com](http://www.stellarinfo.com)

All rights reserved.

All product names mentioned herein are the trademarks of their respective owners.

This license applies to the standard-licensed version of **Stellar Phoenix Windows Data Recovery**.

#### Your Agreement to this License

You should carefully read the following terms and conditions before using, installing or distributing this software, unless you have a different license agreement signed by Stellar Information Technology Private Limited.

If you do not agree to all of the terms and conditions of this License then do not copy, install, distribute or use any copy of **Stellar Phoenix Windows Data Recovery** with which this License is included, you may return the complete package unused without requesting an activation key within 30 days after purchase for a full refund of your payment.

The terms and conditions of this License describe the permitted use and users of each Licensed Copy of **Stellar Phoenix Windows Data Recovery**. For purposes of this License, if you have a valid single-user license, you have the right to use a single Licensed Copy of Stellar Phoenix Windows Data Recovery. If you or your organization has a valid multi-user license, then you or your organization has the right to use up to a number of Licensed Copies of **Stellar Phoenix Windows Data Recovery** equal to the number of copies indicated in the documents issued by Stellar when granting the license.

#### Scope of License

Each Licensed Copy of **Stellar Phoenix Windows Data Recovery** may either be used by a single person or used non-simultaneously by multiple people who use the software personally installed on a single workstation. This is not a concurrent use license.

All rights of any kind in **Stellar Phoenix Windows Data Recovery**, which are not expressly granted in this license, are entirely and exclusively reserved to and by Stellar Information Technology Private Limited. You shall not rent, lease, modify, translate, reverse engineer, decompile, disassemble or create derivative works based on **Stellar Phoenix Windows Data Recovery** nor permit anyone else to do so. You shall not make access to **Stellar Phoenix Windows Data Recovery** available to others in connection with a service bureau, application service provider or similar business nor permit anyone else to do so.

#### Warranty Disclaimers and Liability Limitations

**Stellar Phoenix Windows Data Recovery** and all accompanying software, files, data and materials are distributed and provided AS IS and with no warranties of any kind, whether expressed or implied. You acknowledge that good data processing procedure dictates that any program including **Stellar Phoenix Windows Data Recovery** must be thoroughly tested with non-critical data before there is any reliance on it and you hereby assume the entire risk of all use of the copies of **Stellar Phoenix Windows Data Recovery** covered by this License. This disclaimer of warranty constitutes an essential part of this License. In addition, in no event does Stellar authorize you or anyone else to use **Stellar Phoenix**

**Windows Data Recovery** in applications or systems where its failure to perform can reasonably be expected to result in a significant physical injury or in loss of life. Any such use is entirely at your own risk and you would not hold Stellar responsible for any and all claims or losses relating to such unauthorized use.

In no event shall Stellar Information Technology Private Limited or its suppliers be liable for any special, incidental, indirect, or consequential damages whatsoever (including, without limitation, damages for loss of business profits, business interruption, loss of business information, or any other pecuniary loss) arising out of the use of or inability to use the software product or the provision of or failure to provide support services, even if Stellar Information Technology Private Limited has been advised of the possibility of such damages. In any case, Stellar Information Technology Private Limited's entire liability under any provision shall be limited to the amount actually paid by you for the software product.

#### **General**

This License is the complete statement of the agreement between the parties on the subject matter and merges and supersedes all other or prior understandings, purchase orders, agreements and arrangements. This License shall be governed by the laws of the State of Delhi, India. Exclusive jurisdiction and venue for all matters relating to this License shall be in courts and fora located in the State of Delhi, India and you consent to such jurisdiction and venue. There are no third party beneficiaries of any promises, obligations or representations made by Stellar herein. Any waiver by Stellar of any violation of this License by you shall not constitute nor contribute to a waiver by Stellar of any other or future violation of the same provision or any other provision of this License.

**Copyright © Stellar Information Technology Private Limited. All rights reserved.**

# About Stellar

**Stellar Data Recovery** is a global leader in providing data recovery, data migration and data erasure solutions for the past two decades. **Stellar Data Recovery** is a customer centric, critically acclaimed, global data recovery, data migration & erasure solutions provider with cost effective solutions available for large corporates, SMEs & Home Users. **Stellar Data Recovery** is headquartered in New Delhi, India and has a strong presence across USA, Europe & Asia.

## Product line:

### Data Recovery

A widest range of data recovery software that helps you recover your valued data lost after accidental format, virus problems, software malfunction, file/directory deletion, or even sabotage!. [More Info >>](#)

### File Recovery

The most comprehensive range of file undelete and unerase software for Windows and MS office repair tools. [More Info >>](#)

### Email Recovery

A wide range of mail recovery, mail repair and mail conversion applications for Outlook, Outlook Express and Exchange useful in instances of data loss due to damages and corruption of Email. [More Info >>](#)

### Data Protection

A wide range of Prevent Data Loss, Data backup and Hard Drive Monitoring Applications to ensure complete data protection against hard drive crash. [More Info >>](#)

### Data Erasure

Stellar Data Erasure software under the brand **BitRaser** help businesses & consumers permanently erase confidential data beyond the scope of data recovery. You can perform high speed bulk data erasure & generate erasure certificates for audit trail purpose. **BitRaser** supports 24 International data erasure standards. [More Info >>](#)

For more information about us, please visit [www.stellarinfo.com](http://www.stellarinfo.com)

---