

Subtitle Edit Tutorial

9th of July, 2012

1. Installation

You will need these 3 programs:

1. ***Subtitle Edit***

You can download it [here](#). Choose either the installer in your language or the first link.

Download the zip-file and extract. Run the installer, set the language you want and you can just press next until you get to install. Then install it.

2. ***K-lite codec pack***

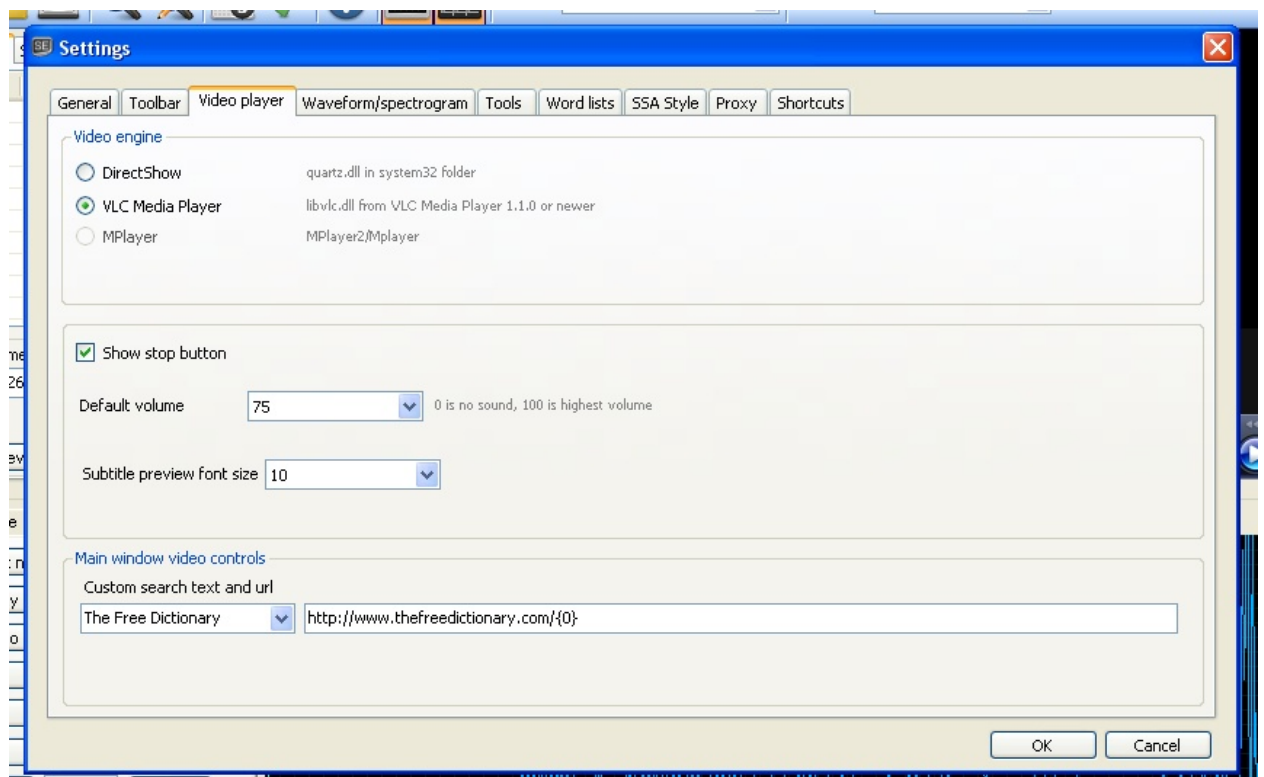
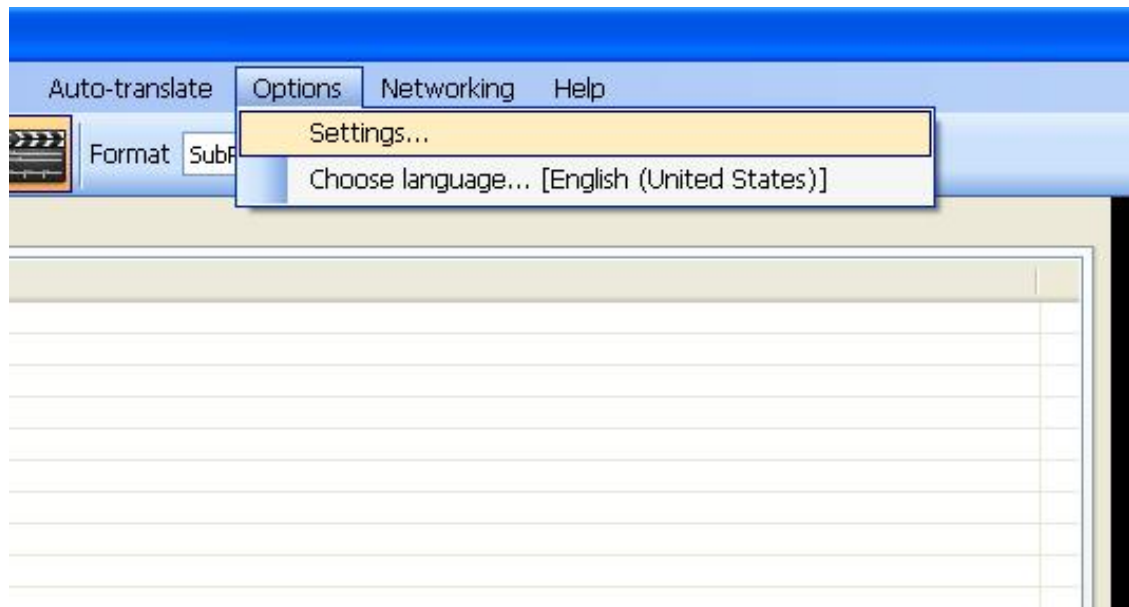
Install this to make sure you have all the codecs you need to play your videos. Download it [here](#). Download the FULL pack and install it. Make sure you don't install the toolbar and browser they offer. Just check the 'No thanks' box.

3. ***VLC Media Player***

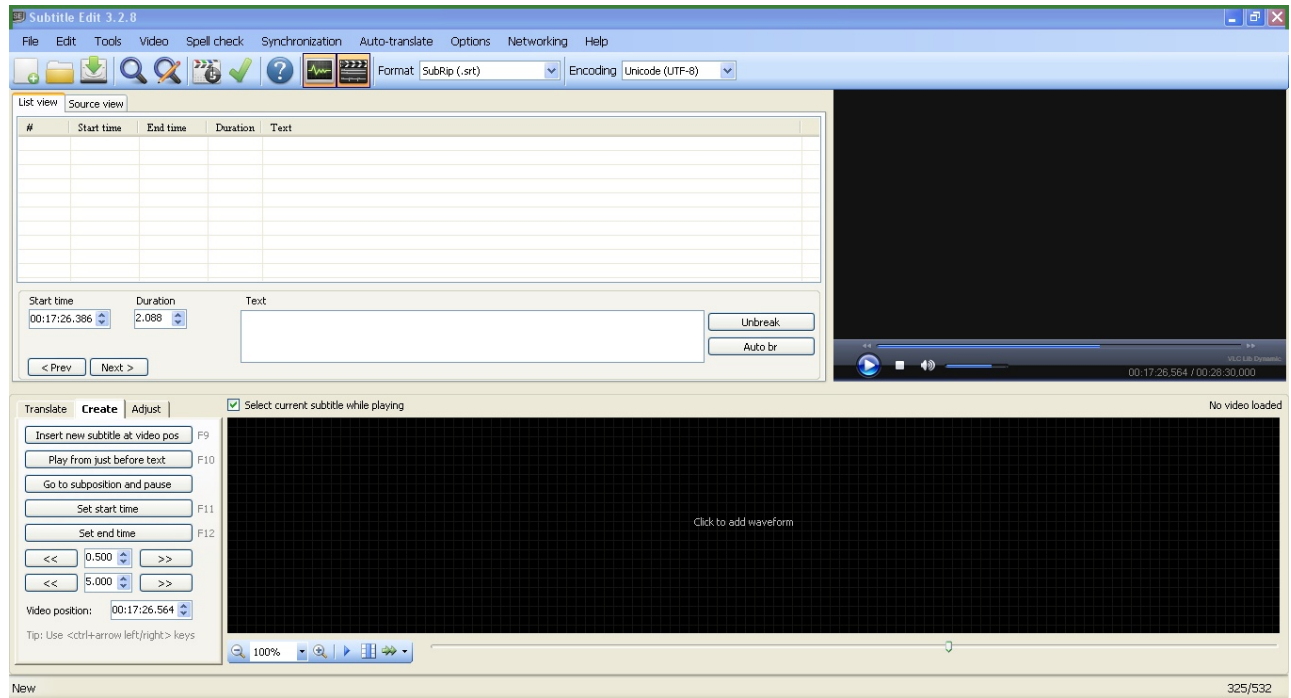
This is needed to display the video which you are going to subtitle within Subtitle Edit. Download it [here](#) and install. Again, make sure you don't install any additional software.

2. Setting up Subtitle Edit

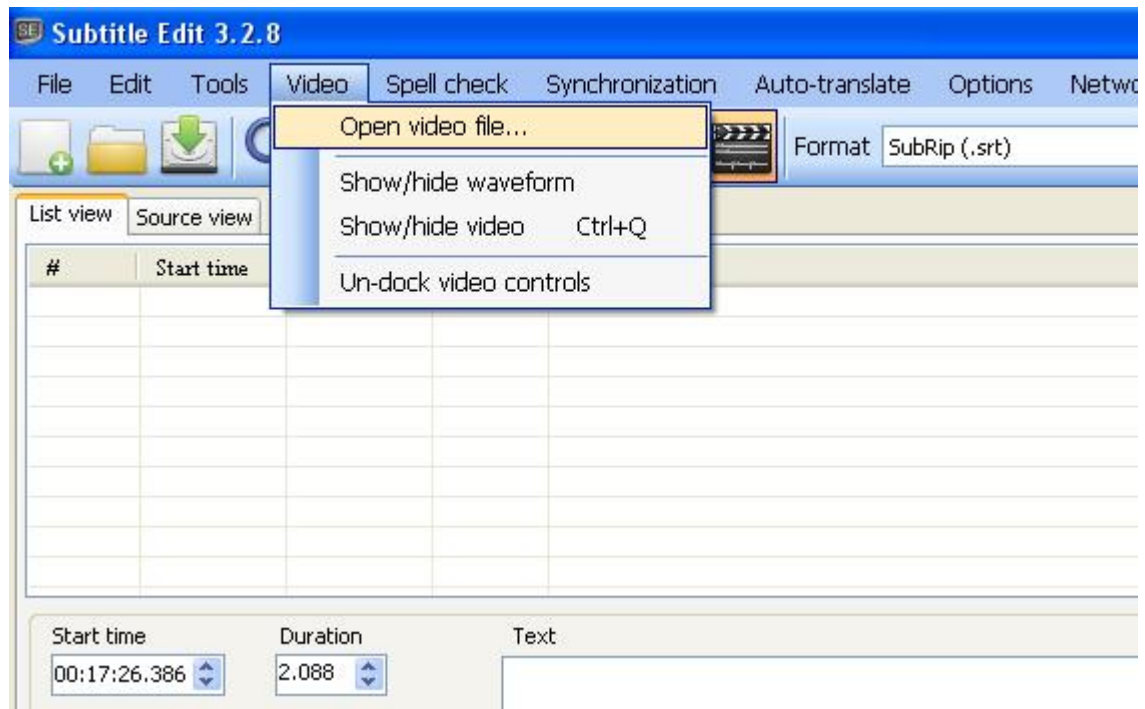
1. First you will need to set up the video player. Go to Options >> Settings >> Video Player and choose VLC Media Player.



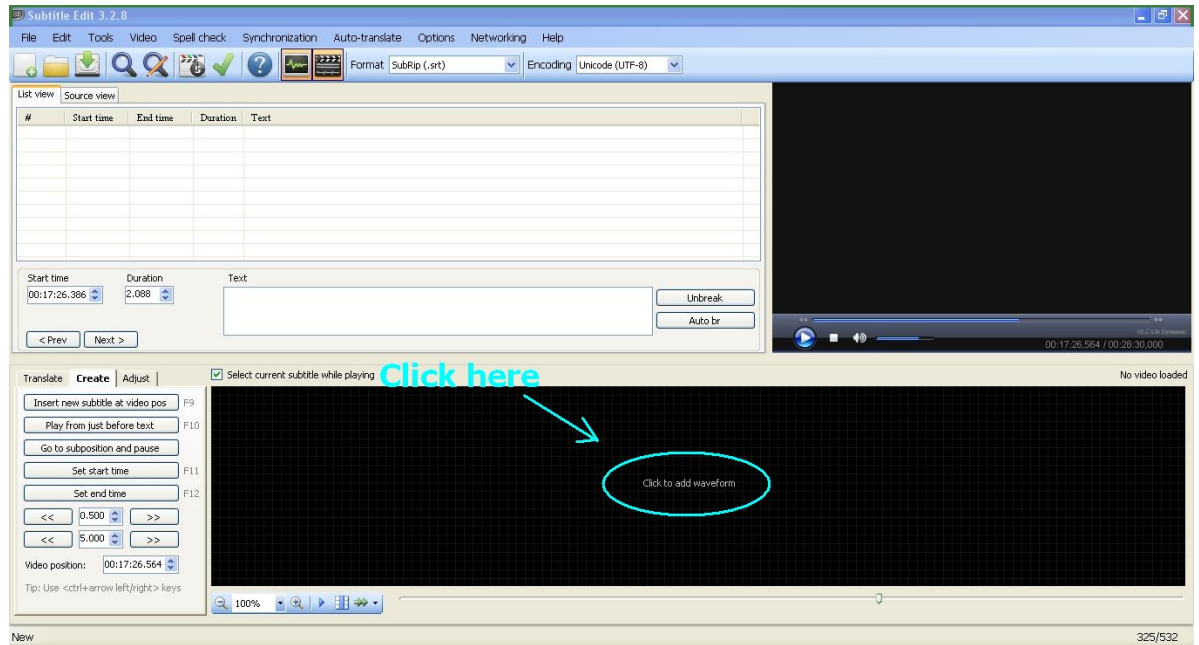
2. Go to Video and click Show/hide waveform and Show/hide video. Your screen should now look like this:



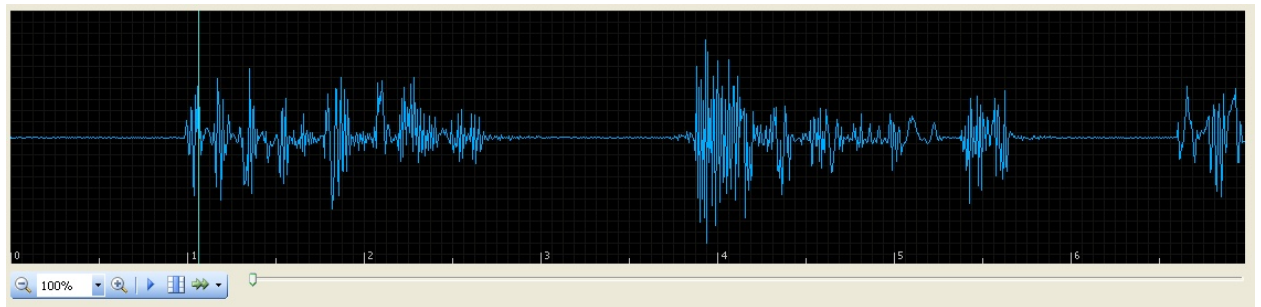
3. Next you should open the video you want to subtitle. Go to Video >> Open video file.



4. Now you will need to generate the waveform. Just click where it says 'Click to add waveform' and wait. Depending on your computer, this could take some time.



When it's done, you should have this:

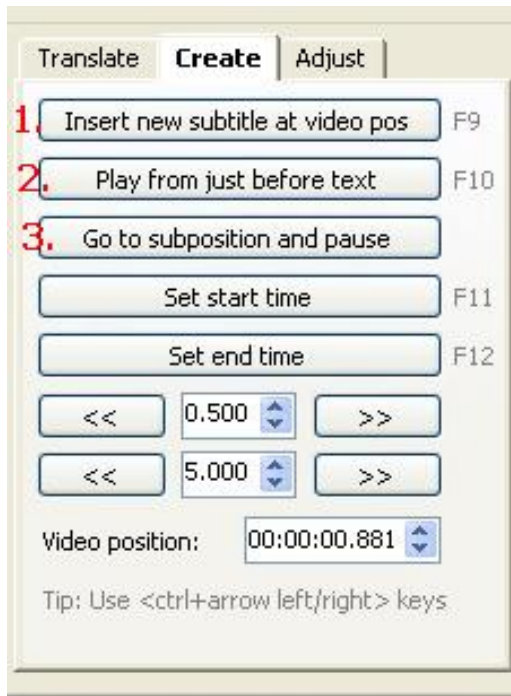


The waveform shows the audio that is being played in the video player. This will help you with setting the position and length of subtitles. Zoom the waveform to 100% and you are ready to start writing the subtitles.

3. Subtitles

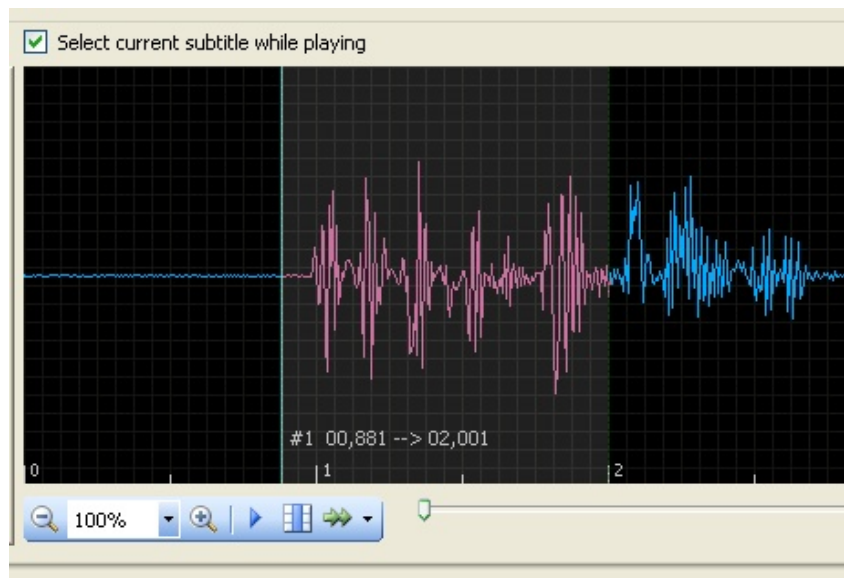
1. Click the Create tab on the left. This will show the menu for creating subtitles.

It looks like this:



1. Creates a new subtitle.
2. Plays video from just before the selected subtitle.
3. Goes to the beginning of the subtitle.

2. The easiest way to set up how long and when the subtitle is being displayed is to use the waveform. The grayed area shows when the subtitle is being displayed.



You can adjust the subtitle by moving and stretching it.

3. Write the text in the text box in the middle. Here you can also adjust the length and position of the subtitle.

Subtitle Edit 3.2.8

File Edit Tools Video Spell check Synchronization Auto-translate Options Networking Help

Format SubRip (.srt) Encoding Unicode (UTF-8)

List view Source view

#	Start time	End time	Duration	Text
1	00:00:00.881	00:00:02.281	1.400	subtitle 1

Start time: 00:00:00.881 Duration: 1.400 Text: subtitle 1 Chars/sec: 7.14

< Prev Next >

Single line length: 10 1,11 Total length: 10

Translate Create Adjust ☒ Select current subtitle while playing

Insert new subtitle at video pos F9

Play from just before text F10

Go to subposition and pause

Set start time F11

Set end time F12

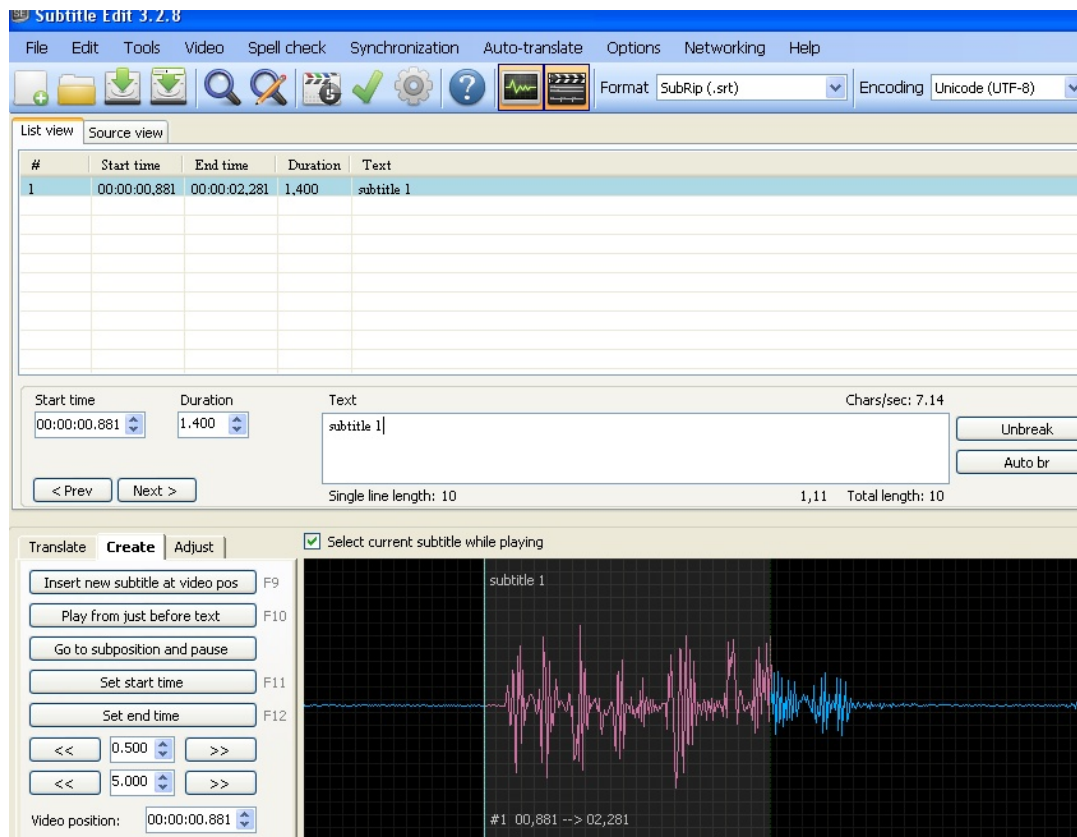
<< 0.500 >>

<< 5.000 >>

Video position: 00:00:00.881

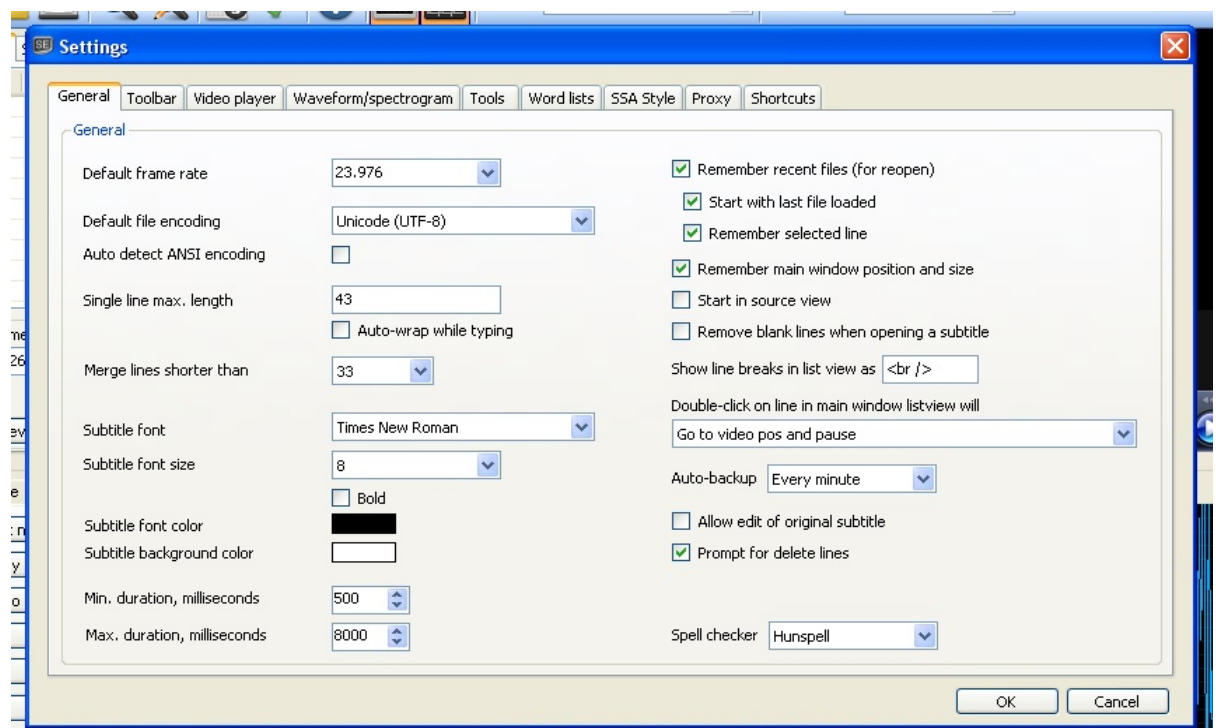
subtitle 1

#1 00,881 --> 02,281

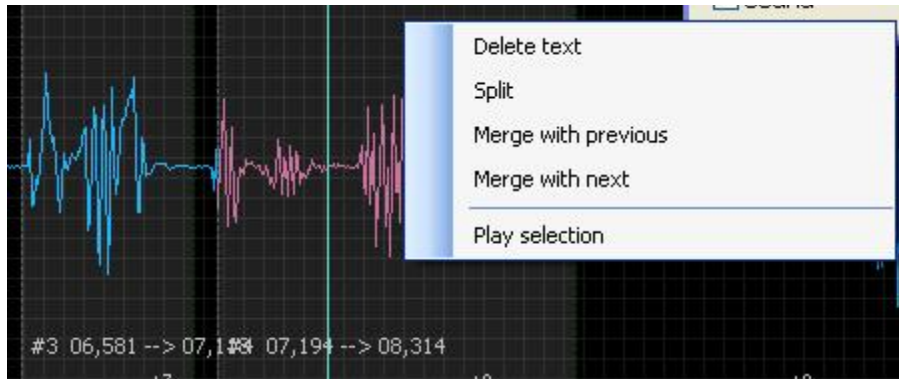


Don't make the subtitles too long. You can change the maximum single line length under Options >> Settings >> General, but 43 characters is the recommended value.

If the single line is more than the maximum length of characters, split it into two lines. The bottom line should be longer than the top line, for aesthetic reasons.



If the subtitle is displayed for too long, or if it contains too many characters, this will be marked by the program by changing the subtitle color to orange and red. You can split the subtitle by Right click >> Split either on the text box or in the waveform.



4. Pro tips

It is best to put some time between the displaying of subtitles, I typically use some 100ms, for this is just enough for the viewers to register that the new subtitle is being displayed.

You should make sure the viewers will have enough time to read the subtitles, to accomplish this the subtitles shouldn't display more than 25 characters per second, but it is better to keep it lower, it should normally be around 10-20 chars/sec.

You can merge the subtitles by Right click >> Merge with previous or Right click >> Merge with next.

Look in the Settings to find shortcuts, change colors of the waveform or subtitles and manage the toolbar.

To avoid losing work set up auto-backup in Settings >> Options >> General.

To have the program open your work from last time, check the 'remember your recent files' checkbox in Settings >> Options >> General.

More help is available on the personal page of the good man who created this free and open program - <http://www.nikse.dk/se/Help.aspx#main>

Also, if you have questions and suggestions for this tutorial, please send an email to sthenc@gmail.com.